

Louisiana State Board of Nursing

2025



Annual Report

“Safeguarding the life and health of the citizens of Louisiana.”

**Louisiana State Board of Nursing
17373 Perkins Road
Baton Rouge, LA 70810**



Letter to the Governor, Members of the Legislature, Other State Agencies, Healthcare Community, Academic Institutions, and the Citizens of Louisiana:

Each year in the ***LSBN Annual Report***, I provide an update on the work the LSBN Board of Directors and the staff have accomplished over the past year. For 2025, the following initiatives were set:

Central Challenge

Positively Impact the Nursing Profession by Advancing Regulatory Excellence in an Ever-changing Health Care Environment.

- Strategic Initiative A: Build organizational capacity and sustainability
- Strategic Initiative B: Strengthen outreach and stakeholder engagement
- Strategic Initiative C: Enhance operational efficiency and effectiveness

Our strategic planning is guided by LSBN's Mission and Vision:

Mission: To safeguard the life and health of the citizens of Louisiana by assuring persons practicing as registered nurses and advanced practice registered nurses are competent and safe.

Vision: LSBN will be a nationally recognized leader and trendsetter in regulatory excellence that advances nursing education, practice, and workforce.

Accomplishments

The Board of Directors, Executive Team and LSBN staff are pleased to present LSBN's 2025 outcomes.

1. The Administrative Procedures Act has mandated that LSBN is required to review their rules every five years. The PICC Insertion and Removal Task Force asked the Board for a rule change to remove LAC 46:XLVII.3707 related to nurses inserting and removing PICC lines. The motion was approved unanimously.
2. The Board accepted Louisiana Christian University's report and action plan regarding the probationary status of the discontinued Baccalaureate of Science in Nursing education degree program and accepts the status of the new Baccalaureate of Science in Nursing program.

3. The Board accepted Herzing University's NCLEX 2024 scores, removed the probationary status, and returned the school to Full Approval Status. The motion was approved unanimously.
4. The Board approved the substantive change request from William Carey University proposing the closure of the Preferred Admissions Track. The Board approved the proposed FY2025 amended annual budget unanimously.
5. The Board adopted a resolution to request the opinion of the Louisiana State Attorney General regarding the use of public funds to establish a financial assistance program for nurses entering the Board's Recovery Nurse Program. The resolution passed unanimously.
6. The Board approved a motion having the hearing panels in conjunction with the Board's meeting scheduled days and having the hearings scheduled bi-monthly. The motion passed unanimously.
7. The Board accepted the 2024 annual reports of 43 pre-licensure and APRN graduate programs as part of the Consent Agenda in April.
8. The Board approved the substantive change request from Simmons University to add the listed tracks and approve the curriculum changes to their approved graduate nursing degree program.
9. The Board unanimously approved the substantive change request from William Carey University proposing the relocation of the current Baton Rouge School of Nursing site from 3600 Florida Boulevard, Suite 1010, Entrance 2, Baton Rouge, Louisiana 70806, inside Baton Rouge General Hospital to 5615 Corporate Boulevard, Suite 300, Baton Rouge, Louisiana 70808.
10. The Board unanimously approved the substantive change request from Herzing University, requesting to add an Accelerated Option and a Bridge Option within the existing BSN program.
11. The Board approved the substantive change request from LSU Health Sciences Center New Orleans (LSUHSC-NO) School of Nursing of the proposed curriculum changes to the Doctor of Nursing Practice (DNP) program within the LSUHSC-NO School of Nursing (LSUHSC-NO SON) with Dr. Manning abstaining.
12. The Board approved the substantive change request from LSU Health Sciences Center, New Orleans (LSUHSC-NO) School of Nursing proposes to add a Bachelor of Science in Nursing (BSN) to the Doctor of Nursing (DNP) program for the Nurse Educator concentration beginning in the summer 2026 semester with Dr. Manning abstaining
13. The Board unanimously approved the request from Bossier Parish Community College to continue the LPN to RN apprenticeship pilot program.
14. The Board unanimously approved the request from Western Governors University to offer undergraduate clinical experiences until April 23, 2028, for the following role/population: Bachelor of Science in Nursing.

15. The Board unanimously accepted the 2024 LSBN Annual Report and the 2024 Nursing Education Capacity Report.
16. The Board approved the proposed FY 2025 Amended Annual Budget with 8 members present and 3 members absent from the June meeting.
17. The Board approved utilizing the Occupational English Test (OET Nursing) to determine English Proficiency for Internationally Educated Licensure Applicants with 3 members absent.
18. The Board approved the request from Liberty University for continued approval to offer graduate clinical experiences until June 25, 2028, for the following role/population: Doctor of Nursing Practice Family Nurse Practitioner, Psychiatric Mental Health Nurse Practitioner, and Psychiatric Mental Health Nurse Practitioner Certificate with 3 members absent.
19. The Board approved the substantive change request from Simmons University to add an online Post Graduate Certificate (PGC) program to their approved graduate nursing degree program for the following specialties: Family Nurse Practitioner (FNP), Psychiatric Mental Health Nurse Practitioner (PMHNP) with 3 members absent.
20. The Board approved the major substantive change notification from Northshore Technical Community College reporting a 33.3% turnover in full-time ASN faculty for the 2024 - 2025 academic year with 3 members absent.
21. The Board approved the request from McNeese State University for full approval status of their Graduate Nursing Program with 3 members absent.
22. The Board moved for acceptance and Approval of the Louisiana Compliance Questionnaire and Board Resolution. The motion was approved with 3 members absent.
23. The Board approved to accept the 2024 Nursing Supply Report with 3 members absent.
24. The Board approved a motion to move forward with full promulgation of a 40% cap on BSN faculty exceptions for pre-licensure programs. The motion passed with 7 for and 4 against.
25. The Board unanimously approved a motion to accept the major substantive change at the UL Monroe nursing program of a 25% turnover in full-time faculty.
26. The Board unanimously approved the major substantive change at Nicholls State University to the mission and outcomes of the BSN program.
27. The Board unanimously approved the request of MedCentris Specialty Group as a continuing education provider.
28. The Board unanimously approved the FY 2025 Financial Audit.

29. The Board unanimously approved the major substantive change to the mission, vision, values and program outcomes for the ASN and BSN programs at LSU Alexandria.
30. The Board approved the major substantive change to the mission, goals, and outcomes for the doctorate, master's, and baccalaureate nursing programs at Loyola University New Orleans with Dr. Collins abstaining.
31. The Board unanimously approved Northshore Technical Community College's request for full approval of their ASN program.
32. The Board continued full approval of South College's request to offer DNPNA clinical experiences in Louisiana.
33. The Board unanimously accepted the NCLEX RN 3rd quarter results.
34. The Board unanimously approved the 2026 calendar for Board Hearings and Board Meetings.
35. The Board unanimously approved Alicia Wheeler as Executive Counsel to the Board, approved her job description, and approved her compensation.
36. The Board unanimously approved the FY2027 Annual Budget.
37. The Board unanimously approved the substantive change of Wm. Carey University to revise the nursing curriculum to reflect a semester-based structure and to incorporate the revised AACN Essentials into its curriculum.
38. The Board unanimously approved Northshore Technical Community College's implementation of an LPN to RN-ASN Bridge Program.
39. The Board unanimously approved Bossier Parish Community College's request to add clinical facilities to its LPN to RN Apprenticeship Program.
40. The Board unanimously approved Northwestern State University to add the Allied Health to ASN pathway to the existing two established nontraditional entry pathways into the ASN curriculum and to consolidate all three pathways under a single concentration title, the Transition to RN Concentration.
41. The Board unanimously approved Sura College's request for approval of their Registered Nurse Refresher Program.
42. The Board unanimously approved the NCSBN Guidelines for Complaints Involving Marijuana.

Changing population demographics and health care needs demand that practitioners, educators, and regulators work together in response to changing needs for modernization of occupational licensure. We are experiencing both shortages and maldistribution of RNs and APRNs. The need for remote healthcare is increasing. We need to do more to articulate nursing licensure across jurisdictions and promote

telehealth practice. The promotion of efficient regulatory models that increase the mobility of nurses is essential, as are new models of healthcare delivery led by nurses. LSBN will continue our efforts to grow in these areas.

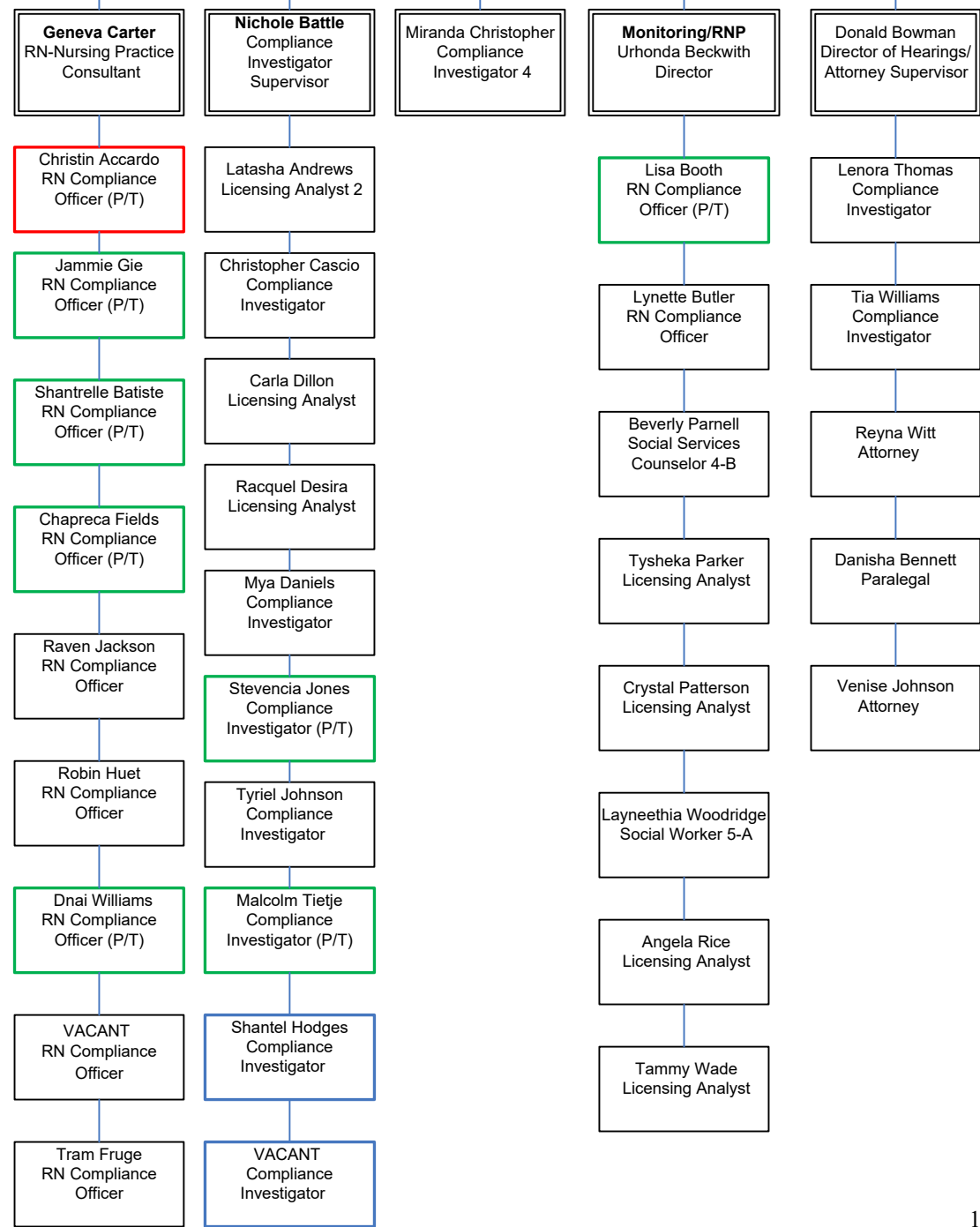
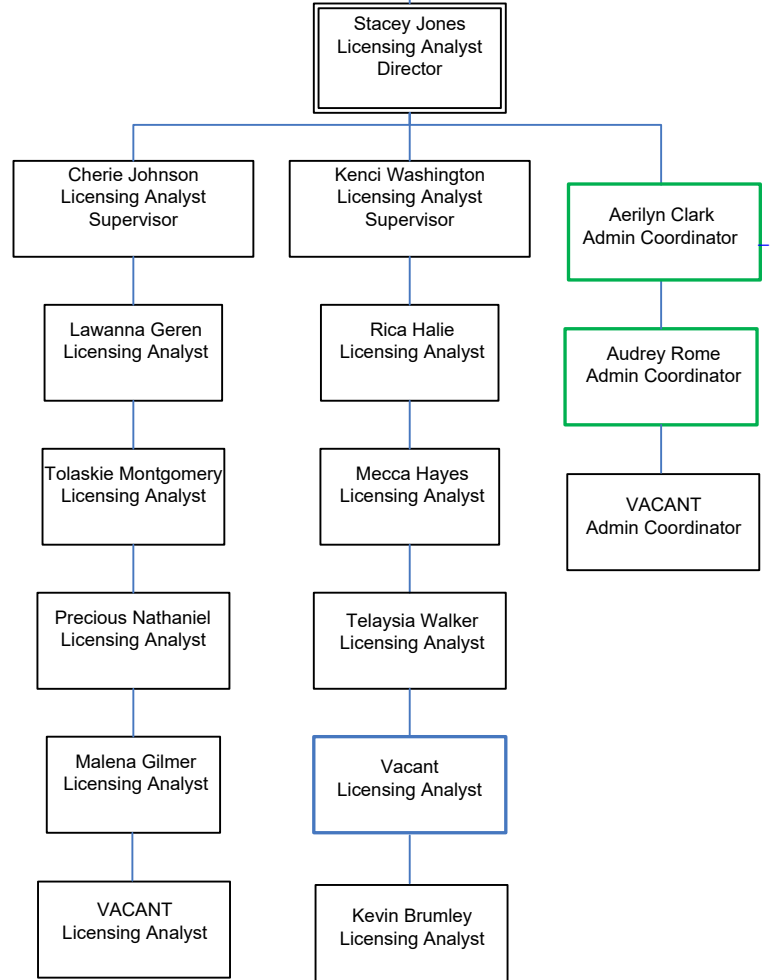
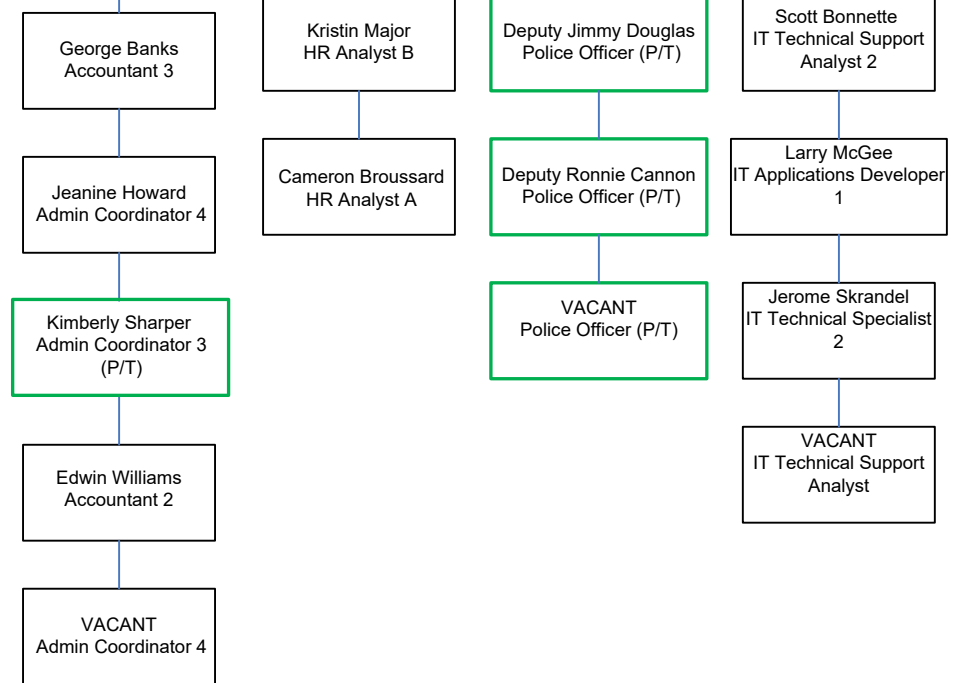
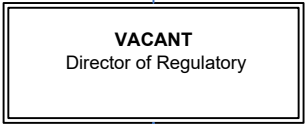
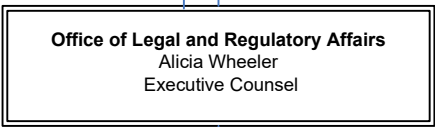
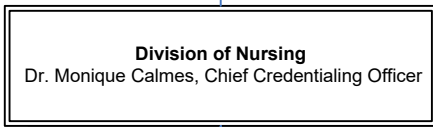
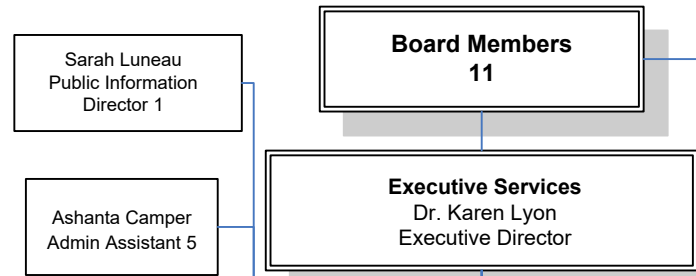
For the Public Trust,



Karen Carter Lyon, PhD, MBA, APRN/CNS_{BC}, NEA_{BC}
Chief Executive Officer/Executive Director & Appointing Authority

TABLE OF CONTENTS

<u>TITLE</u>	<u>PAGE</u>
LSBN Organizational Chart	1
LSBN Board Members and Staff	2
Duties and Powers of LSBN	3
2025 Rulemaking	5
2025 Major Motions (by month)	6
Complaints and Investigations	20
Hearings	22
Recovering Nurse Program/Monitoring	25
Licensure	28
LSBN Division of Administration	32
Louisiana Center for Nursing	33
Nursing Education Capacity in Louisiana.....	34
Pre-RN Licensure Programs	34
Advanced Practice Registered Nurse Education in Louisiana.....	48
Graduate Nursing Programs in Louisiana Offering Non-Licensure Degrees in Nursing	53
Nursing Faculty Teaching in Louisiana	
Faculty Teaching in Pre-RN Licensure Programs.....	43
Faculty Teaching in APRN Programs	58
The 2025 Nurse Supply Report	62
References	63
APPENDICES	
A. LSBN Approved Nursing Education Programs.....	65
B. NCLEX-Passage Rates, Admissions, Enrollment and Graduates.....	79
B1. Performance of First-Time Candidates of Nursing Programs in Louisiana on NCLEX-RN.....	80
B2. Applicants, Admissions, Enrollment and Graduates of Nursing Education Programs in Louisiana (2008-2025)	81
B3. Qualified Applicants and Admissions: Diploma, Associate and Baccalaureate Degree Programs (2021-2025).....	82
B4. Admissions Data: Why Qualified Applicants Were Not Admitted to Louisiana Nursing Education Programs (2025)	83
B5. Gender of Students Enrolled in Clinical Nursing Courses in Pre-RN Licensure Programs in Louisiana (2025).....	84
B6. Ethnic Backgrounds of Students Enrolled in Pre-RN Licensure Programs in Louisiana (2025).....	85
B7. Pre-RN Licensure Students Enrolled in Clinical Nursing Courses with Prior Education (December 31, 2025).....	87
B8. Graduates of Associate, Baccalaureate and Diploma Nursing Education Programs (2019-2025).....	88
C. Enrollment and Graduates from APRN Programs in Louisiana	89



LSBN ORG CHART
as of 12/31/2025

Key of Position Type

- Full-Time (Regular)
- Hourly (Regular)
- Hourly (Seasonal)
- Job Appointment (Seasonal)

2025 MEMBERS OF THE BOARD

The members of the Board serving for the 2025 Annual Report year were:

Amie Bulliard, MS, RN, CPHQ	President, Other Areas of Nursing Practice
Jennifer M. Manning, DNS, APRN, CNS, CNE	Vice-President, Nursing Education
Ann Carruth, DNS	Alternate Officer, Nursing Education
Denise Bottcher	Board Member, Consumer
Michelle R. Collins, PhD, CNM, RNC-EFM, FACNM, FAAN, FNAP	Board Member, Other Areas of Nursing Practice
Jennifer S. Couvillon, PhD, RN-BC, CNE	Board Member, Nursing Education
Tracey P. Moffatt, MHA, BSN, RN	Board Member, Nursing Service Administrator
Teresita McNabb, RN, MHA	Board Member, Nursing Service Administrator
Katrina O'Con, PhD, DNAP, CRNA, FAANA	Board Member, Nurse Anesthetist
Fredrick Pinkney, Ed.D.	Board Member, Consumer
Deborah Spann, MSN, RN-BC, CEN, FAEN	Board Member, Other Areas of Nursing Practice

2025 LSBN MANAGEMENT TEAM

Executive Leadership Team

Karen C. Lyon, PhD, RN, ACNS, NEA	Chief Executive Officer/Appointing Authority
Isonel M. Brown, MS, MBA	Chief Administrative Officer
Monique Calmes, DNP, APRN, FNP-BC	Chief Credentialing Officer
Alicia Edmond Wheeler	Executive Counsel/Chief Regulatory Officer

Department Directors, Team Leaders, and Managers

Urhonda Beckwith, MSN, APRN, FNP	Director, Recovering Nurse Program/Monitoring
Donald Bowman	Director, Hearings
Stacey Jones	Director, Licensing
Nichole Battle	Team Leader, Compliance Investigators
Geneva Carter, MSN, APRN, FNP	Team Leader, RN Compliance Officers
Katrina Duncan	Manager, Accounting and Administrative Services
Vacant	Manager, Human Resources
Carl Nagin	Manager, Information Technology

LSBN Board Members and staff would like to thank our outgoing Board Members for their leadership and guidance during their tenure.

As of 12/31/2025

Duties and Powers of the Louisiana State Board of Nursing

§918. Duties and powers of the board

The board shall:

- (1) Establish and publish minimum curriculum requirements and standards for individuals seeking to be licensed under this Part.
- (2) Approve nursing education programs whose graduates meet the licensing requirements of the board.
- (3) Provide for hearings for nurse educational programs when approval is denied or withdrawn.
- (4) Establish and publish standards of nursing practice and education in accordance with those developed and accepted by the profession.
- (5) Examine, approve, renew, and reinstate licenses of duly qualified applicants and establish examination procedures for such purposes.
- (6) Deny, revoke, suspend, probate, limit or otherwise restrict licenses of individuals who violate this Part.
- (7) Provide procedure and conduct hearings for the discipline of individuals as needed and establish alternatives to the disciplinary process when considered appropriate by the board.
- (8) Cause the prosecution of all persons violating any provision of this Part.
- (9) Keep a record of all board proceedings.
- (10) Publish an annual report for distribution to the governor and the legislature containing the activities of the board during the past year.
- (11) Maintain a roster of all individuals licensed under this Part and annually prepare a roster of the names and addresses of all such licensees. A copy of the roster shall be made available to any individual requesting it upon payment of a fee established by the board as sufficient to cover the cost of copying the roster.
- (12) Adopt and revise rules and regulations necessary to enable the board to implement this Part in accordance with the Administrative Procedure Act.
- (13) Employ an executive director who holds a current license to practice nursing and other persons necessary to implement the board's directives, rules, and regulations and to assist the board in the implementation of this Part.
- (14) Appoint an attorney at law to represent the board in all matters pertaining to the administration of the provisions of this Part, fix his compensation, and define his duties.
- (15) Have all other powers necessary and proper to the performance of their duties, including but not limited to the power to subpoena.
- (16) Have the authority to:
 - (a) Request and obtain state and national criminal history record information on any person applying for any license or permit which the board is authorized by law to issue, including permission to enroll as a student nurse in clinical nursing courses.
 - (b) Require any applicant for any license or permit, which the board is authorized to issue, including permission to enroll as a student in clinical nursing courses, to submit a full set of fingerprints, in a form and manner prescribed by the board, as a condition to the board's consideration of his or her application.
 - (c) Charge and collect from an applicant for any license or permit which the board is authorized to issue, including permission to enroll as a student in clinical nursing courses, in addition to all other

applicable fees and costs, such amount as may be incurred by the board in requesting and obtaining criminal history record information on the applicant.

(d) Promulgate rules and regulations in accordance with the Administrative Procedure Act to implement the provisions of this Paragraph.

(17) Have the authority and jurisdiction to regulate student nurses in the clinical phase of nursing education; however, nothing in this Part shall require the licensure by the board of student nurses during the clinical phase of their education.

(18) Develop, adopt, and revise rules and regulations governing scope of practice for advanced practice registered nurses including but not limited to prescriptive authority, the receipt and distribution of sample drugs and prepackaged drugs, and prescribing of legend and certain controlled drugs.

(19) Enforce the rules and regulations in place on the effective date of this Subsection until such time as the Board of Nursing promulgates rules and regulations in accordance with this Section.

(20) Have the authority to purchase, lease, maintain, or otherwise contract with respect to immovable property and improvements thereon as it may deem necessary or appropriate to accomplish the provisions of this Part. Additionally, the board shall have the authority to borrow funds with the approval of the State Bond Commission and to expend funds of the board for the acquisition of immovable property and improvements thereon. In the event that the board sells immovable property and improvements thereon, the revenue derived from the sale shall be retained by the board and shall not be subject to reversion to the state general fund.

(21) Have the authority to share any information in the custody of the board, including information not subject to the laws relative to public records pursuant to R.S. 44:4(9), with any regulatory or law enforcement agency upon written request of the regulatory or law enforcement agency.

Acts 1976, No. 351, §1; Acts 1995, No. 633, §1, eff. Jan. 1, 1996; Acts 1997, No. 311, §1; Acts 1999, No. 315, §1, eff. June 16, 1999; Acts 2003, No. 957, §1; Acts 2003, No. 1094, §1, eff. July 2, 2003; Acts 2010, No. 943, §1

2025 RULEMAKING BY LOUISIANA STATE BOARD OF NURSING

Through a comprehensive rulemaking process that allowed stakeholder engagement, public comment, and thorough legal and policy analysis, the LSBN filed two notices of intent to promulgate rules in 2025.

LAC 46:XLVII.3515 - Faculty and Faculty Organization of Undergraduate and Graduate Nursing Education Degree Programs: Qualifications

Proposed revision of LAC 46:XLVII.3515 limited the exception to the academic qualifications for undergraduate nurse faculty. The proposed revision was withdrawn.

LAC 46:XLVII.3707 - Peripherally Inserted Central Catheter (PICC) Insertion and Removal

Proposed repeal of LAC 46:XLVII.3707 removed prescriptive regulatory requirements for PICC insertion/removal and deferred decision-making to healthcare providers and institutions. The proposed repeal received no opposition, and the final rule was published in the Louisiana Register, repealing all language pertaining to peripherally inserted central catheter insertion and removal.

The LSBN remains committed to enforcing regulations effectively and evaluating their impact to ensure continued alignment with our mission and objectives.

2025 Major Motions

February 20, 2025 Board Meeting

Motion to accept the agenda as presented.

Motion carried.

Motion to approve the minutes of the December 5, 2024 Board Meeting.

Motion carried.

UNFINISHED BUSINESS

Motion to remove LAC 46:XLVII.3707 in its entirety.

Motion carried.

NEW BUSINESS

Consent Agenda Motions

1. LSBN Staff Program Status Reports
 - a. NCLEX Reports
2. Education Announcements
 - a. Change in Midwifery Program- LSU Health Sciences Center New Orleans
 - b. Change in Dean of Nursing- Southern University New Orleans
 - c. Change in Chief Nursing Administrator- Chamberlain University
 - d. Change in Program Director- LSU Eunice
 - e. Change in Administration- Dillard University
 - f. Change in Curriculum (Minor Updates) - Chamberlain University
 - g. ACEN Approval for Enrollment Increase- LSU Alexandria
 - h. Change in Administration - United States University
 - i. Change in Curriculum- LSU Health New Orleans
 - j. Change in Curriculum- Nicholls State University
 - k. CCNE Acceptance of Substantive Change- William Carey University
 - l. Change in Administration- Southern University New Orleans
 - m. Change in Department Title- St. Tammany Hospital (Continuing Education Provider)
 - n. CCNE Continued Accreditation- Chamberlain University
 - o. ACEN review of Candidacy Eligibility- Northshore Technical Eligibility
 - p. Change in Administration- Louisiana Tech University
3. Continuing Education Providers -Reapproval
 - a. Louisiana Hospital Association

Motion to accept the Consent Agenda Motions.

Motion carried.

EDUCATION AND EXAMINATION

Motion to accept Louisiana Christian University's report and action plan regarding the probationary status of the discontinued Baccalaureate of Science in Nursing education degree program and accept the current status of the new Baccalaureate of Science in Nursing program.

Motion carried.

Motion to accept Herzing University's NCLEX 2024 scores and remove the probationary status and return the school to Full Approval Status.

Motion carried.

Motion to approve the substantive change request from William Carey University proposing the closure of the Preferred Admissions Track.

Motion carried.

DIVISION OF ADMINISTRATION

Motion to approve the proposed FY2025 amended annual budget.

Motion carried.

OFFICE OF EXECUTIVE COUNSEL

Motion to adopt a resolution to request an opinion of the Louisiana State Attorney General regarding the use of public funds to establish a financial assistance program for nurses entering the Board's Recovery Nurse Program.

Motion carried.

OFFICE OF THE EXECUTIVE DIRECTOR / CEO

REPORTS

Motion to approve the Reports of the President, Vice President, and the Executive Director/CEO.

Motion carried.

EXECUTIVE SESSION

Motion to go into Executive Session for the purposes of hearing the Report on Litigation and Personnel Issues.

Motion carried.

Motion to adjourn. Meeting was adjourned at 2:30 p.m.

Motion carried.

April 24, 2025 Board Meeting

Motion to add an agenda item on the timing and scheduling of the hearing panels.

Motion carried.

Motion to accept the agenda as amended.

Motion carried.

Motion to approve the minutes from the February 20, 2025 Board Meeting.

Motion carried.

UNFINISHED BUSINESS

Motion to approve having the hearing panels in conjunction with the Board's meeting scheduled days and have the hearings scheduled bi-monthly.

Motion carried.

NEW BUSINESS

Consent Agenda Motions

1. LSBN Staff Program Status Reports
 - a. NCLEX Reports
2. 2024 Schools of Nursing Annual Reports
 - a. Baton Rouge General Medical Center's 2024 Undergraduate Annual Report
 - b. Bossier Parish Community College's 2024 Undergraduate Annual Report
 - c. Baton Rouge Community College's 2024 Undergraduate Annual Report
 - d. Chamberlain University's 2024 Undergraduate Annual Report
 - e. Delgado Community College's 2024 Undergraduate Annual Report
 - f. Dillard University's 2024 Undergraduate Annual Report
 - g. Fletcher Technical Community College's 2024 Undergraduate Annual Report
 - h. Franciscan Missionaries of Our Lady University's 2024 Undergraduate Annual Report
 - i. Grambling State University's 2024 Undergraduate Annual Report
 - j. Herzing University's 2024 Undergraduate Annual Report
 - k. Louisiana Christian University's 2024 Undergraduate Annual Report
 - l. Louisiana Delta Community College's 2024 Undergraduate Annual Report
 - m. Louisiana Tech University's 2024 Undergraduate Annual Report
 - n. Loyola University's 2024 Undergraduate Annual Report

- o. Louisiana State University at Alexandria’s 2024 Undergraduate Annual Report
 - p. Louisiana State University at Eunice’s 2024 Undergraduate Annual Report
 - q. Louisiana State University Health New Orleans’ 2024 Undergraduate Annual Report
 - r. McNeese State University’s 2024 Undergraduate Annual Report
 - s. Nicholls State University 2024 Undergraduate Annual Report
 - t. Northshore Technical Community College’s 2024 Undergraduate Annual Report
 - u. Northwestern State University’s 2024 Undergraduate Annual Report
 - v. South Louisiana Community College’s 2024 Undergraduate Annual Report
 - w. Southeastern Louisiana University’s 2024 Undergraduate Annual Report
 - x. Southern University Baton Rouge 2024 Undergraduate Annual Report
 - y. Southern University at New Orleans’ 2024 Undergraduate Annual Report
 - z. Southern University at Shreveport’s 2024 Undergraduate Annual Report
 - aa. SOWELA Technical Community College’s 2024 Undergraduate Annual Report
 - bb. Tulane University’s 2024 Undergraduate Annual Report
 - cc. University of Holy Cross’ 2024 Undergraduate Annual Report
 - dd. University of Louisiana at Lafayette’s 2024 Undergraduate Annual Report
 - ee. University of Louisiana at Monroe’s 2024 Undergraduate Annual Report
 - ff. William Carey University’s 2024 Undergraduate Annual Report
 - gg. Franciscan Missionaries of Our Lady University’s 2024 Graduate Annual Report
 - hh. Grambling State University’s 2024 Graduate Annual Report
 - ii. Intercollegiate Consortium for a Master of Science in Nursing’s 2024 Graduate Annual Report
 - jj. Loyola University’s 2024 Graduate Annual Report
 - kk. Louisiana State University Health New Orleans’ 2024 Graduate Annual Report
 - ll. McNeese State University’s 2024 Graduate Annual Report
 - mm. Northwestern State University’s 2024 Graduate Annual Report
 - nn. Southeastern Louisiana University’s 2024 Graduate Annual Report
 - oo. Southern University at Baton Rouge’s 2024 Graduate Annual Report
 - pp. University of Louisiana at Lafayette’s 2024 Graduate Annual Report
 - qq. University of Louisiana at Monroe’s 2024 Annual Report
3. Education Announcements
- a. Change in Administration- Louisiana Tech University
 - b. Change in Administration- Louisiana Delta Community College
 - c. Change in Administration- Herzing University
 - d. Change in Address- Chamberlain University
 - e. Change in Administration- Nursing CE Central
 - f. Change in ASN Program- Fletcher Technical Community College
 - g. Change in Administration - Louisiana Delta Community College
 - h. Change in Administration- Chamberlain University

Motion to accept the Consent Agenda Motions.

Motion Carried.

EDUCATION AND EXAMINATION

Motion to approve the substantive change request from Simmons University to add the listed tracks and approve the curriculum changes to their approved graduate nursing degree program.

Motion carried.

Motion to approve the substantive change request from William Carey University proposing the relocation of the current Baton Rouge School of Nursing site from 3600 Florida Boulevard, Suite 1010, Entrance 2, Baton Rouge, Louisiana 70806, inside Baton Rouge General Hospital to 5615 Corporate Boulevard, Suite 300, Baton Rouge, Louisiana 70808.

Motion carried.

Motion to approve the substantive change request from Herzing University requesting to add an Accelerated Option and a Bridge Option within the existing BSN program.

Motion carried.

Motion to approve the substantive change request from LSU Health Sciences Center New Orleans (LSUHSC-NO) School of Nursing of the proposed curriculum changes to the Doctor of Nursing Practice (DNP) program within the LSUHSC-NO School of Nursing (LSUHSC-NO SON).

Motion carried.

Motion to approve the substantive change request from LSU Health Sciences Center New Orleans (LSUHSC-NO) School of Nursing proposing to add a Bachelor of Science in Nursing (BSN) to Doctor of Nursing (DNP) program for the Nurse Educator concentration beginning in the summer 2026 semester.

Motion carried.

Motion to approve the request from Bossier Parish Community College to continue the LPN to RN apprenticeship pilot program.

Motion carried.

Motion to approve the request from Western Governors University to offer undergraduate clinical experiences until April 23, 2028, for the following role/population: Bachelor of Science in Nursing.

Motion carried.

OFFICE OF THE EXECUTIVE DIRECTOR / CEO

Motion to accept the 2024 LSBN Annual Report and the 2024 Nursing Education Capacity Report.

Motion carried.

REPORTS

Motion to approve the Reports of the President, Vice President, and the Executive Director/CEO.

Motion carried.

Motion to adjourn. Meeting was adjourned at 12:31 p.m.

Motion carried.

June 26, 2025 Board Meeting

Motion to approve the agenda as amended with the ability to rearrange the agenda items for efficiency.

Motion carried.

Motion to approve the minutes from the April 24, 2025 Board Meeting.

Motion carried.

NEW BUSINESS

DIVISION OF ADMINISTRATION

Motion to approve the proposed FY 2025 Amended Annual Budget.

Motion carried.

EDUCATION AND EXAMINATION

Consent Agenda Motions

1. Education Announcements
 - a. ACEN Accreditation - Dillard University
 - b. Change in Administration - McNeese State University
 - c. ACEN Accreditation - Bossier Parish Community College
 - d. ACEN Accreditation - Louisiana Delta Community College
 - e. Change in Administration - Southern University at New Orleans
 - f. Proposed Addition to LPN to RN Track - Delgado Community College
 - g. Addition to LPN to Rn Track - South Louisiana Community College
 - h. Change in Administration - Woman's Hospital ix Change in Administration - Herzing University
 - i. Change in Address - United States University
 - j. Change in Administration - Northshore Technical Community College
 - k. ACEN Accreditation- Northshore Technical Community College

- l. Change in Address - Baton Rouge Community College
- m. Change in Administration - University of Holy Cross
- n. Change in Administration - LSU Health New Orleans
- o. Change in Administration – LSU Health New Orleans

Motion to accept Education Announcement o., Change in Curriculum - LSU Health New Orleans.

Motion carried.

- p. Change in Administration - Loyola University New Orleans
- q. Change in Administration - Northwestern State University
- r. Change in Curriculum - Northwestern State University

Motion to accept the above Consent Agenda Motions.

Motion carried.

LICENSURE AND PRACTICE

Motion to approve utilizing the Occupational English Test (OET Nursing) to determine English Proficiency for Internationally Educated Licensure Applicants.

Motion carried.

EDUCATION AND EXAMINATION

Motion to approve the request from Liberty University for continued approval to offer graduate clinical experiences until June 25, 2028, for the following role/population:

- Doctor of Nursing Practice
- Family Nurse Practitioner
- Psychiatric Mental Health Nurse Practitioner
- Psychiatric Mental Health Nurse Practitioner Certificate

Motion carried.

Motion to approve the substantive change request from Simmons University to add an online Post Graduate Certificate (PGC) program to their approved graduate nursing degree program for the following specialties:

- Family Nurse Practitioner (FNP)
- Psychiatric Mental Health Nurse Practitioner (PMHNP)

Motion carried.

Motion to approve the major substantive change notification from Northshore Technical Community College reporting a 33.3% turnover in full-time ASN faculty for the 2024 - 2025 academic year.

Motion carried.

Motion to approve the request from McNeese State University for full approval status of their Graduate Nursing Program.

Motion carried.

DIVISION OF ADMINISTRATION

Motion for acceptance and approval of the Louisiana Compliance Questionnaire and Board Resolution.

Motion carried.

OFFICE OF THE EXECUTIVE DIRECTOR/CEO

Motion to accept the 2024 Nursing Supply Report.

Motion carried.

Motion to approve the reports of the President, Vice President, and the Executive Director/CEO.

Motion carried.

EXECUTIVE SESSION

Motion for the Board to go into Executive Session for the purposes of hearing the Report on Litigation and Personnel issues.

Motion carried.

Motion to adjourn. Meeting was adjourned at 11:30 a.m.

Motion carried.

August 28, 2025

Motion to approve the agenda with the ability to rearrange the agenda items for efficiency.

Motion carried.

Motion to approve the minutes from the June 26, 2025 Board Meeting.

Motion carried.

UNFINISHED BUSINESS

Motion to move forward to a full promulgation of the proposed rule of a 40 percent cap.

Motion carried.

NEW BUSINESS

Consent Agenda Motions

1. LSBN Staff Program Status Reports
 - a. NCLEX Reports
2. Education Announcements
 - a. Change in Administration - Louisiana Tech University
 - b. Change in Administration - Louisiana Christian University
 - c. SACSCOC Review Change - Dillard University
 - d. Change in Administration - Louisiana State University at Eunice
 - e. Change in Administration - Dillard University
 - f. ANCC Accreditation - Nicholls State University
 - g. Change in Administration - University of Louisiana at Monroe
 - h. Change in School of Nursing Name - Georgetown University
 - i. Change in CCNE Accreditation - LCMC Health

Motion to accept the above Consent Agenda Motions.

Motion carried.

EDUCATION AND EXAMINATION

Motion to approve the major substantive change notification from the Kitty DeGree School of Nursing at the University of Louisiana at Monroe, reporting a 25% turnover in full-time faculty.

Motion carried.

Motion to approve the major substantive change notification from the Thibodaux Regional Health System School of Nursing at Nicholls State University to both the mission and outcomes for the BSN program at the Thibodaux Regional Health System School of Nursing at Nicholls State University.

Motion carried.

Motion to approve the two major substantive change proposals from Vanderbilt School of Nursing as described in the summary presented by Mr. Fontenot.

Motion carried.

Motion to approve the request of MedCentris Specialty Group as a Continuing Education Provider to expire on August 28, 2029.

Motion carried.

Motion to approve the request from Southwest Mississippi Community College for continued approval to offer undergraduate clinical experiences until February 16, 2029, for the following role/population:
Associate of Science in Nursing

Motion carried.

DIVISION OF ADMINISTRATION

Motion to accept and approve LSBN Board Resolution for contractual legal services with Shows, Cali & Walsh, LLP for the period of July 1, 2025 to June 30, 2026 in the amount of \$200,000.

Motion carried.

Motion to accept and approve LSBN Board Resolution for contractual legal services with Louisiana Department of Justice for the period of July 1, 2025 to June 30, 2026 in the amount of \$20,000.

Motion carried.

OFFICE OF THE EXECUTIVE DIRECTOR/CEO

Motion to approve the reports of the President, Vice President, and the Executive Director/CEO.

Motion carried.

Motion to adjourn. Meeting was adjourned at 1:01 p.m.

Motion carried.

October 23, 2025

Motion to adopt the agenda as amended.

Motion carried.

Motion to approve the minutes from the August 28, 2025 Board Meeting.

Motion carried.

DIVISION OF ADMINISTRATION

Motion to accept the FY2025 Financial Audit Report.

Motion carried.

NEW BUSINESS

Consent Agenda Motions

1. Education Announcements
 - a. Education Announcement - University of Louisiana at Lafayette
 - b. Education Announcement - Louisiana Delta Community College
 - c. Education Announcement - Tulane University

Motion to accept the above Consent Agenda Motions.

Motion carried.

EDUCATION AND EXAMINATION

Motion to approve the major substantive change request from Herzing University to add the listed tracks to their current approved program.

Motion carried.

Motion to approve the major substantive change request from Louisiana State University of Alexandria to the Mission, Vision, Values, and Program Outcomes for both the Associate of Science in Nursing (ASN) and the Registered Nurse to Bachelor of Science in Nursing (RN – BSN) programs.

Motion carried.

Motion to approve the major substantive change request from Loyola University New Orleans to the school of nursing's mission, goals, and outcomes, and to approve the missions, goals, and outcomes of the Doctorate, Master's, and Baccalaureate programs.

Motion carried.

Motion to approve the request from Northshore Technical Community College for full approval status of their Associate of Science in Nursing (ASN) program.

Motion carried.

Motion to approve the request from South College for continued approval to offer graduate clinical experiences in Louisiana for their Doctor of Nursing Practice (DNP) Nurse Anesthesia Program until October 23, 2028.

Motion carried.

Motion to accept the NCLEX-RN pass rate report for 2025 3rd quarter.

Motion carried.

OFFICE OF THE EXECUTIVE DIRECTOR/CEO

Motion to approve the proposed 2026 calendar for Board hearings and meeting dates.

Motion carried.

Motion to approve the reports of the President, Vice President, and the Executive Director / CEO.

Motion carried.

EXECUTIVE SESSION

Motion to go into Executive Session for the purpose of hearing the Report on Litigation and Personnel Issues.

Motion carried.

Motion to return to Open Session at 1:20 p.m.

Motion carried.

Motion to appoint Alicia Wheeler as the Board Attorney/Executive Counsel amended on her original hire date of April 22, 2024; to adopt her new job description as provided by Ms. Brown; to set compensation agreed on by the Board of Directors during Executive Session to begin today October 23, 2025.

Motion carried.

Motion to adjourn. Meeting was adjourned at 1:32 p.m.

Motion carried.

December 4, 2025

Motion to adopt the agenda as amended.

Motion carried.

Motion to approve the minutes from the October 23, 2025 Board Meeting.

Motion carried.

DIVISION OF ADMINISTRATION

Motion to approve the proposed FY2027 annual budget.

Motion carried.

NEW BUSINESS

Consent Agenda Motions

1. Education Announcements
 - a. Education Announcement – LSU Health Center
 - b. Education Announcement – Southeastern Louisiana University

Motion to accept the above Consent Agenda Motions.

Motion carried.

EDUCATION AND EXAMINATION

Motion to approve the substantive change request from William Carey University to revise its curriculum to reflect a semester-based structure and to incorporate the revised AACN Essentials into its curriculum.

Motion carried.

Motion to approve the substantive change request from Northshore Technical Community College proposing the implementation of an LPN-to-RN Bridge Program leading to the Associate of Science in Nursing (ASN) degree.

Motion carried.

Motion to approve the substantive change request from Bossier Parish Community College requesting approval to add the facilities listed in the summary as clinical sites for the LPN-to-RN Apprenticeship Program.

Motion carried.

Motion to approve the substantive change request from Northwestern State University requesting approval to add the Allied Health to ASN pathway to the existing two established nontraditional entry

pathways into the ASN curriculum and to consolidate all three pathways under a single concentration title, the Transition to RN Concentration.

Motion carried.

Motion to approve the request from Sura College for approval of their Registered Nurse Refresher Program.

Motion carried.

Motion to approve Southern University New Orleans to remain in Initial Approval status due to non-compliance with LAC XLVII 3535.B.

Motion carried.

OFFICE OF EXECUTIVE COUNSEL

Motion to approve the NCSBN Guidelines for Complaints Involving Marijuana.

Motion carried.

OFFICE OF THE EXECUTIVE DIRECTOR/CEO

Motion to develop a letter regarding rulemaking about graduate nursing education by the Department of Education.

Motion carried.

Motion to approve the reports of the President, Vice President, and the Executive Director/CEO.

Motion carried.

EXECUTIVE SESSION

Motion to go into Executive Session for the purpose of hearing the Report on Litigation and Personnel Issues.

Motion carried.

Motion to adjourn. Meeting was adjourned at 2:35 p.m.

Motion carried.

COMPLAINTS AND INVESTIGATIONS

Louisiana State Board of Nursing Complaints and Investigations for Calendar Year 2025

There were 648 individuals with complaints that resulted in open investigations and consideration for disciplinary action by LSBN for calendar year 2025. Approximately 52.32% (339) were against Registered Nurses, 33.49% (217) were against Nursing Students and 9.41% (61) were against Advanced Practiced Registered Nurses.

Table 1. Classification of Individuals Who Were Subjects of Complaints 2025

Classification	2025	
	No.	%
Registered Nurse	339	52.32
Nursing Student	217	33.49
Endorsement Applicant	11	1.70
Advanced Practice Registered Nurses	61	9.41
Exam Applicant	13	2.00
Imposter	7	1.08
Totals	648	100.00

Source of Open Investigations

As shown in Table 2, the largest source of complaints resulting in open investigations was the Board of Nursing/LSBN Staff with 56.33% (365), followed by Employer with 16.50% (107). Other sources include, but are not limited to, self-reported, student file, and other. LSBN complaints are filed by staff based on information received by the Board, such as from answers to compliance questions on applications for licensure by examination, endorsement, renewal and/or clinical permit, as well as from notification of arrest by law enforcement.

Table 2. Source of Open Investigations

Source	2025	
	No.	%
Student File	13	2.00
Self-Reported	57	8.80
Board of Nursing/LSBN Staff	365	56.33
Criminal Arrest	2	0.37
Employer	107	16.50
Other	104	16.00
Totals	648	100.00

Types of Complaints or Potential Violations Resulting in Open Investigations

As shown in Table 3, of the complaints received by LSBN in 2025 for further investigation, 53.08% (344) were criminal conduct. The second and third largest number of complaints, respectively, unsafe practice of substandard care 13.00% (87) and drug related 6.70% (44).

Table 3. Type of Complaint or Potential Violations Resulting in Open Investigations

Source	2025	
	No.	%
Confidentiality, Consent or Disclosure Violations	39	6.01
Criminal Conduct	344	53.08
Drug Diversion or Misappropriation	14	2.10
Drug Related	44	6.70
Fraud Deception or Misrepresentation	39	6.01
Mental/Medical Condition	3	0.46
Misconduct or Abuse	22	3.00
Non-Compliance with Federal, State or Contractual Requirements	6	0.93
Unsafe Practice or Substandard Care	87	13.00
Substance Abuse	22	3.00
Other	37	5.71
Totals	648	100.00

Closed Investigations

LSBN staff closed 553 investigations during 2025.

HEARINGS DEPARTMENT

The Hearings Department oversees cases that have been moved from the Compliance Department for disciplinary actions, as well as handling disciplinary measures initiated in the Monitoring Department. It ensures that disciplinary matters are properly reported to the National Practitioner Data Bank through the National Council of State Boards of Nursing and upholds the accuracy and integrity of the information provided. In addition, the Department is tasked with defending Final Board Orders that are appealed through judicial review. The Hearings Department also responds to public records requests and subpoenas issued to the Louisiana State Board of Nursing.

Table 4. Hearings Department Statistical Report

DISCIPLINE REPORT	
Board Hearings	6
Discipline Files Reviewed	386
Total Actions Taken	400
A. Reinstatements	
1. Granted/Suspended w/ stay/probation/stipulations (or probate)	11
2. Granted/Stipulations	1
3. Granted/Reprimand	26
4. Deny/Delay/Ratify	3
5. Deny/Delay/Stipulations	0
6. Approved for Temp Permit for Refresher Course	1
7. Request for Reconsideration	0
B. Discipline Actions	
1. Summary Suspension (Ratify)	20
2. Revoked	1
3. Suspended/Stipulations	14
4. Automatic Revoke/Ratify Staff Action	0
5. Voluntary Surrender	19
6. Automatic Suspension/Ratify Staff Action	37
7. Suspended with Stay/Probation/Stipulations	54
8. Renewed License/Probation	0
9. Retain License w/Probation	10
10. Reprimand	89
11. Request for Reconsideration	0
C. Endorsement	
1. Approved Reprimand	2
2. Deny/Delay/Ratify Staff Action	1
3. Approved/Probation/Stipulations	0
4. Delay/Stipulations	0
5. Automatic Suspension Ratify Staff Action	0
D. Education	
1. Applicant: NCLEX Deny/Delay/Ratify Staff Action	4
2. Applicant: NCLEX Approved/Probation/Stipulations	5
3. Applicant: NCLEX Approved/Reprimand/Stipulations	0

4. Applicant: NCLEX Deny/Delay/Stipulations	1
5. Applicant: NCLEX Automatic Suspension/Ratify	0
6. Student: Deny/Delay/Ratify Staff Action	44
7. Student: Approved/Ratify Staff Action	2
8. Student: Approved/Probation/Stipulations	0
9. Student: Approved/Stipulations	22
10. Student: Approved/Reprimand	3
11. Student: Delay/Deny/Stipulations	0
12. Student: Automatic Suspension/Rescind/Immediate Denial	18
13. Applicant/Student Request for Rehearing/Reconsideration	0
E. Special Statistics Included Above	
1. Consent Orders	251
2. Applicant: NCLEX	10
3. Student: Clinical	89
Miscellaneous - NLC Discipline	
1. Summary Suspension of Privilege to Practice (ratified)	0
2. Privilege to Practice suspended	4
3. Louisiana MSL converted to SSL	1
4. Privilege to Practice probated	0
5. Privilege to Practice cease and desist	8
Non-Discipline Actions	
1. Hearing Recessed	0
2. Continuance	0
3. Charges Dismissed	1
4. Other	2

Table 5. Basis for Discipline

Out of the discipline files reviewed by the Board, the basis for discipline is as follows:

Basis for Discipline	No.	%
Boundary Violations	0	0.00
Breach of Patient Confidentiality	9	2.33
Criminal	126	32.64
Disciplinary Action by Another Board	13	3.37
Drug/Alcohol	140	36.27
Fraud/Deceit	39	10.10
Non-Compliance with Board Order	48	12.44
Other	77	19.95
Patient Abuse	9	2.33
Physical Illness/Impairment	1	0.26
Practiced Beyond Scope	10	2.59
Practicing with an Expired License or Without a License	30	7.77
Psychological/Mental	7	1.81
Substandard or Inadequate Care	18	4.66
Unprofessional Conduct	2	0.52

Note: Each case may have multiple bases for discipline.

Table 6. Classification of Individuals Subject to Discipline

Classification	No.	%
Advanced Practice Registered Nurse	20	5.18
Endorsement Applicant	4	1.04
NCLEX Applicant	9	2.33
Privilege to Practice	0	0.00
Registered Nurse	260	67.36
Student Nurse Applicant	93	24.09

Table 7. Age Ranges of Individuals Subject to Discipline

Age Category	No.	%
< 21	5	1.30
21-30	68	17.62
31-40	112	29.02
41-50	107	27.72
51-60	71	18.39
61-70	21	5.44
>70	2	0.52

Table 8. LSBN Board Actions Over Five-Year Period (2021-2025)

Year	No. of Actions
2025	400
2024	446
2023	459
2022	385
2021	245

RECOVERING NURSE PROGRAM / MONITORING

The Recovering Nurse Program/Monitoring Department monitors Advanced Practice Registered Nurses, Registered Nurses, and Student Nurses in the Recovering Nurse Program (RNP) through confidential or disciplinary agreements and disciplinary board orders. The RNP is a five-year volunteer program developed to protect the consumers of health care in Louisiana while allowing an individual recovering from a substance use disorder and/or a medical, mental, or physical condition to maintain licensure while being closely monitored by the Board through a structured program agreement. Participants can join the program confidentially if they meet the criteria outlined in LAC:46: XLVII 3419. After completing inpatient treatment and receiving approval from the RNP staff, a participant can return to work. Stipulations include, but are not limited to, frequent random drug screenings, employment restrictions, and participation in support groups such as Alcoholics Anonymous.

In contrast to some agencies using independent alternative-to-discipline programs, the RNP is housed within the Louisiana State Board of Nursing (LSBN); therefore, any noncompliance or relapse, once confirmed, is acted upon promptly, often resulting in either immediate return for treatment or automatic suspension of the nursing license. This process affords due process to participants while protecting the public and citizens of Louisiana from potentially impaired practitioners.

The Monitoring Division monitors compliance with Board Orders (excluding RNP participants). These individuals may have stipulations that are often similar to RNP, such as drug screening and employment restrictions, but they are usually monitored for less than five years and have not been diagnosed with moderate or severe substance use disorder. (Table 9)

Additionally, the RNP/Monitoring Director and Program Managers process disciplinary reinstatement requests from individuals previously disciplined by LSBN, including students who are delayed/denied and require monitoring while being allowed to complete clinical nursing courses. The individual's history is reviewed, and stipulations for reinstatement or approval for clinical nursing courses are provided. In 2025, one hundred and three (103) reinstatement requests were received, and thirty-seven (37) requests were approved. The Director and Program Managers investigate the often-complex histories of previously disciplined individuals to determine eligibility for reinstatement. Some individuals choose not to pursue reinstatement after the list of mandated stipulations are provided. Individuals with an extensive disciplinary history may be required to appear before a Board Hearing Panel to determine eligibility for reinstatement.

Finally, the Department drafts voluntary surrender agreements for individuals desiring to surrender their license(s) rather than comply with an RNP agreement or a Board order. Licensees who voluntarily surrender their license(s) are ineligible to apply for license reinstatement for a minimum of two (2) years. The Department drafted twenty-one (21) voluntary surrender agreements in 2025.

Table 9. RNP/Monitoring Department Statistics

2025	Annual
1. Monitoring: Total number of Cases being monitored (December 31, 2025)	240
A. Number of new entries	250
B. Number of successfully completed participants	144
C. Number of automatic suspensions	25
D. Number of reinstatements/approvals	37
E. Number of reinstatement requests	103
F. Number of released non-compliant participants	17
2. RNP: Total number of RNP participants (December 31, 2025)	229
A.1. Number of confidential participants	108
A.2. Number of disciplinary participants	121
B. Number of RN/APRN self-reports	37
C. Total number of new RNP entries	43
C.1. New entries confidential RNP	20
C.2. New entries disciplinary RNP	23
D. Number of refused RNP	11
E. Number of successfully completed participants	36
F. Number of released non-compliant participants	17
G. Number of relapsed active participants	6
H. Number of automatic suspensions	27
I. Number of relapsed participants after completion	5
TOTAL NUMBER OF MONITORING/RNP PARTICIPANTS	469
In-office conferences	41
Total presentations	18
Treatment facilities visited	2

Departmental Highlights in 2025

In March 2025, Dr. Barry Lubin, MD, FASAM, Medical Review Officer (MRO) for Spectrum Compliance Affinity eHealth, an LSBN-designated drug testing company, visited LSBN to update staff on their drug testing processes and new drugs available for testing.

In July 2025, Red Hill Recovery, located in Delhi, LA, was approved as a board-recognized treatment center offering a Partial Hospitalization Program (PHP), an Intensive Outpatient Program (IOP), Inpatient Evaluations, and Residential Treatment.

In December 2025, the RNP staff held its annual Recovering Nurse Program, Group Facilitator Workshop for all Group Facilitators via Zoom.

Board-recognized evaluation and treatment centers continued to visit LSBN to update the staff on their treatment processes.

Urhonda Beckwith, the RNP/Monitoring Director, continues to serve as LSBN's Designee for the Advisory Council on Heroin and Opioid Prevention Education (HOPE) and the Safe Haven Consortium.

The staff continues to attend various Annual Educational Conferences and meetings to enhance RNP/Monitoring program processes, gain knowledge through networking with other state boards, and stay abreast of issues related to better outcomes.

The RNP/Monitoring Director and Program Managers continue to provide RNP presentations upon request to nursing schools, organizations, and healthcare facilities, both virtually and in person.

LICENSURE

Approval to Enroll in Clinical Nursing Courses

There were 4,349 applications to enroll in clinical nursing courses during the calendar year of 2025 as compared to 4,041 in 2024, which represents an 8% increase.

Completion of Louisiana Undergraduate Nursing Program

There were 2,672 graduates from 33 undergraduate nursing programs in Louisiana. Of this number, 79 (2.96%) were Diploma graduates, 1,174 (43.94%) were Associate Degree graduates, and 1,419 (53.11%) were Baccalaureate Degree graduates.

Licensure by Examination

During the 2025 calendar year (January 1 - December 31, 2025), 2,463 graduates were granted temporary RN applicant permits and 2,828 candidates sat for the NCLEX-RN examination using computerized adaptive testing (CAT). These candidates included first-time takers, repeat takers, and foreign graduates. By initial licensure by examination, 2,648 individuals were licensed to practice as registered nurses. 2,593 Louisiana graduates sat for the NCLEX-RN exam for the first time. Of this number, 2,321 passed the exam. First-time candidates from nursing programs in Louisiana achieved a pass rate of 89.51% for the 2025 calendar year. This is above the national average of 86.71%. Performance of first-time candidates of nursing education programs in Louisiana can be found in Appendix C.

Licensure by Examination Advanced Practice Registered Nurses

LSBN authorizes the practice of advanced practice registered nurses (APRNs) by examination in four categories: Certified Registered Nurse Anesthetist (CRNA), Certified Nurse Midwife (CNM), Clinical Nurse Specialist (CNS), and Nurse Practitioner (NP).

A total of 640 APRN licensure by examination applications were received during the year 2025. A total of 573 individuals were licensed to practice in 2025 as APRNs: 63 CRNAs, 6 as CNMs, one as a CNS, and 503 NPs. Incomplete or expired applications, or those that indicate an applicant did not meet eligibility requirements, are not counted toward the total number licensed. The total number of APRNs licensed by examination in 2025 increased by 4% from the previous year.

Licensure Renewals Registered Nurses/Advanced Practice Registered Nurses

A total of 40,208 RNs and 7,091 APRNs successfully renewed their licenses to practice nursing in Louisiana by January 31, 2025. Note that these total numbers differ each year due to biennial renewal.

A total of 2,287 individuals relinquished the right to practice nursing in Louisiana, as follows: 1,940 RNs and 347 APRNs failed to renew their license; 290 RNs and 32 APRNs requested and were

approved for inactive status; and 200 RNs and 19 APRNs requested and were approved for retired status.

Licensure by Endorsement Registered Nurses

As reflected in Table 10, a total of 742 RN endorsement applications to practice registered nursing in Louisiana were received during the year 2025. Of the total received, 643 were received from United States (U.S.) educated RNs, and 99 were received from foreign-educated RNs.

Of the endorsement applications received, a total of 631 individuals were licensed to practice as an RN, as follows: 542 U.S.-educated RNs and 89 foreign-educated RNs. Licensure of foreign-educated nurses has shown a significant increase due to the global pandemic. The remaining endorsement applications were not processed through licensure due to one of the following reasons: their application was incomplete and/or expired or the RN completed a temporary nursing assignment and did not desire full licensure. Interestingly, the total number of RNs applying for licensure by endorsement in 2025 decreased by 4.50% from the previous year. This continues to indicate the plateau expected under the Nurse Licensure Compact. The implementation of the Nurse Licensure Compact on July 1, 2019, created an opportunity for individuals to provide RN services in Louisiana with the privilege to practice while holding a multistate license in another compact state, which is considered their primary state of residence. Thus, a decrease in endorsement applications was anticipated.

Table 10. Licensure by Endorsement into Louisiana (2020-2025)

Report Year	Applications Received – U.S. Educated	Applications Received – Foreign Educated	Total RN Applications <u>Received</u> (U.S. & Foreign)	United States Educated RN License Issued	Foreign Educated RN License Issued	Total RN Licenses <u>Issued</u> (U.S. & Foreign)
2025	643	99	742	542	89	631
2024	760	90	776	569	89	658
2023	773	160	933	676	164	840
2022	1032	104	1136	866	98	964
2021	1031	88	1119	837	68	905

Licensure by Endorsement Advanced Practice Registered Nurses

A total of 903 endorsement applications to practice as an APRN in Louisiana were received during the year 2025. All these applications were received from APRNs educated in the U.S. or a U.S. territory.

Of those endorsement applications received, a total of 686 APRN applications were completed through licensure, as follows: 23 CRNAs, 23 CNMs, 2 CNS, and 638 NPs. The remaining applications received in 2025 were not processed through licensure because the applications were incomplete and/or expired or the applicant did not meet eligibility requirements. The total number of APRNs applying for licensure by endorsement in 2025 represents a 42 % increase from the previous year.

Licensure by Reinstatement Registered Nurses/Advanced Practice Registered Nurses

A total of 451 individuals reinstated their nursing privileges in Louisiana in 2025, including 374 RNs and 77 APRNs. This number represents a 2% decrease from the previous year.

Temporary Permits Issued Registered Nurses

The total number of RN temporary permits issued in 2025 was 64. Permits are issued to allow the RN holding a valid and unencumbered RN license in another US jurisdiction, and who has applied for licensure by endorsement, to work as an RN in Louisiana until all documents are received in the LSBN office, and full licensure can be issued. The total number of RNs issued temporary permits in 2025 decreased by 42% from the previous year. This decrease can be attributed to the implementation of the nurse licensure compact. No Disaster Permits were issued in 2025.

Temporary Permits Issued Advanced Practice Registered Nurses

A total of 7 temporary permits were issued to APRN applicants in 2025. The permit is issued to allow the APRN applicants to provide limited services while obtaining unconditional national certification or to allow the APRN applicant to obtain the required clinical hours to demonstrate current competency. No disaster permits were issued to APRNs in 2025.

Conversion Applications

Louisiana implemented the Nurse Licensure Compact (NLC) on July 1, 2019. All licenses issued prior to this date are considered single-state licenses. As of July 1, 2019, all applications for initial licensure as an RN (by examination and endorsement) are reviewed for eligibility to receive a multistate RN license. Licensees holding a current, active, single-state RN license may apply for conversion of the license to a multistate/compact license. A total of 1,565 conversion applications were received in 2025, a 16% increase from 2024. Of those applications, 1,269 were approved and converted from single-state to multistate RN licenses. The remaining applications received in 2025 were not processed through licensure because they were incomplete and/or expired, or because the applicants did not meet eligibility requirements.

Verification of Credentials to Other States Registered Nurses/Advanced Practice Registered Nurses

During 2025, a total of 2,311 RNs used the National Council of State Boards of Nursing (NCSBN) verification service (NurSys.com) to request that their Louisiana RN credentials be verified by another state board of nursing. The implementation of the Nurse Licensure Compact (NLC) July 1, 2019, created an opportunity for individuals to provide services as an RN with the privilege to practice in any compact state while holding a multistate license issued by Louisiana. Table 11 reflects the number of individuals requesting licensure verifications per year for the previous years.

Table 11. License Verification Out of Louisiana (2020-2025)

Report Year	Number of Verifications
2025 Nursys Processed	2,311
2024 Nursys Processed	2,136
2023 Nursys Processed	2,413
2022 Nursys Processed	4,647
2021 Nursys Processed	2,322

*Note: Due to a variety of factors, it cannot be assumed that there is a relationship between a request for verification of credentials and the number of RNs leaving the state.

**Prescriptive Authority
Advanced Practice Registered Nurses**

Prior to delivering health care services in the state of Louisiana, an APRN who engages in medical diagnosis and management (including writing any orders) must apply for and receive approval from the LSBN for prescriptive authority privileges. Said prescriptive authority privileges must be in collaboration with one or more physicians. The total number of APRNs with prescriptive and distributing authority in compliance with the Board’s rules as of the end of the year 2025 was 7,002. The total represents a 6% increase from 2024.

AUDIT OF CONTINUING EDUCATION/NURSING PRACTICE REQUIREMENTS

In accordance with LAC 46: XLVII.3335.I.2, the Louisiana State Board of Nursing performed an audit of the 2024 nursing continuing education (CE)/nursing practice completed by RNs who renewed a 2025-2026 nursing license.

A random selection of RNs renewing their license during the 2025 licensure renewal process was conducted on five hundred eighty-eight (588) RNs. Five hundred twenty-seven (527) were compliant and met the requirements of the rules. Of the remaining sixty-one (61) RNs, the audit resulted in the following:

- Fifty-four (54) RNs were issued informal warnings for first-time non-compliance.
- Two RNs were sent to the compliance department for review for non-compliance with the CE audit requirement in more than one renewal period.
- Five were granted exemption

In accordance with LAC 46: XLVII.4513.D.6, the Louisiana State Board of Nursing performed an audit on the continuing competency for prescriptive authority for the 2025 license renewal period on seventy-six (76) APRNs. Email notifications were sent to the APRNs advising them of their selection to participate in the random audit of six hours of pharmacology CE required to renew their prescriptive authority privileges. Of the 76 APRNs selected, 51 were compliant. The remaining twenty-five APRNs were issued informal warnings for first-time non-compliance.

LSBN DIVISION OF ADMINISTRATION

The goal of LSBN’s Division of Administration (hereinafter “Division”) is to oversee LSBN’s financial and fiscal health, safeguard LSBN’s assets through a sound internal control framework, and maintain compliance with financial, statutory, and regulatory requirements. The Division oversees the Accounting, Human Resources, Information Technology, Facility Management, Security, Front Desk, Records Management, and Risk Management functions of LSBN.

2025 Fiscal Report

LSBN’s annual auditor is selected through a request for proposal (RFP) process that is managed and awarded by the Louisiana Legislative Auditor. LSBN’s 2025 financial and compliance audit was conducted by Griffin & Furman, LLC. LSBN received an “unmodified” opinion, where the auditor concluded that the financial statements were presented fairly, in all material respects, and in accordance with generally accepted accounting principles (GAAP). There were no findings.

According to LSBN’s 2025 audit report, LSBN collected \$9,296,844.00 in annual operating revenues from licensure, examination, and enforcement actions (Figure 1). During the fiscal year, the Board incurred operating expenses of \$7,569,622.00 (Figure 2), of which salaries/payroll and related expenses consumed 79% of the total expense. The Board’s net position increased by \$2,673,554, which includes \$946,332.00 in non-operating revenue. With respect to excess revenues, LSBN intends to continue making investments to address cybersecurity, key strategic initiatives, strengthening operational effectiveness and responsive service to the public.

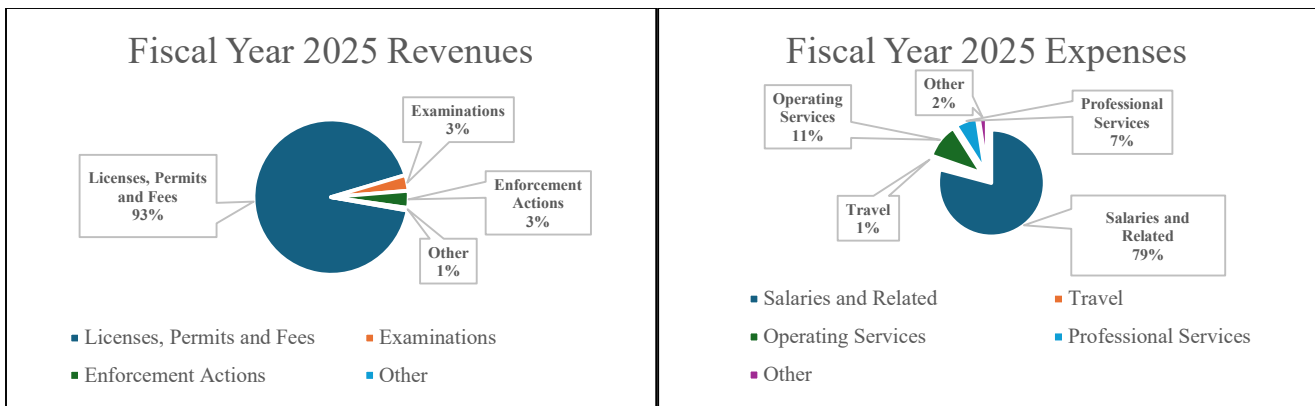


Figure 1 LSBN FY 2025 Revenues

Figure 2 LSBN FY 2025 Expenses

LOUISIANA CENTER FOR NURSING

The 2025 Louisiana State Board of Nursing (LSBN) Licensure Renewal season marked the eleventh year of renewals using the National Council of State Boards of Nursing (NCSBN) Optimal Regulatory Board System (ORBS) online licensure renewal system. This is also the eighth year that LSBN has maintained licensure data for all licensed registered nurses (RNs) and advanced practice registered nurses (APRNs) through ORBS. Over the past eleven years, the LSBN IT Department, the Center for Nursing, and the ORBS Team have worked diligently to ensure the data's accuracy and quality, that will be used by our stakeholders to inform policymaking regarding Louisiana's RN and APRN workforce.

The [Louisiana Center for Nursing Nurse Supply Report](#) is based on a snapshot of all RNs and APRNs with an active license to practice in Louisiana as of December 31, 2024. This marks the seventh consecutive year that the Louisiana Center for Nursing has been able to track and trend data following LSBN's transition to ORBS. The report was published in June 2025.

The [2024 Nursing Education Capacity Report](#) was included in the 2024 LSBN Annual Report. Findings from Louisiana's Nursing Education Capacity Report provide valuable information to the LSBN board members, employers of RNs and APRNs, schools of nursing, workforce planners, policy makers, and other interested stakeholders, about the states' capacity to educate new and existing RNs and APRNs, as well as the state's ability to provide opportunities to those RNs and APRNs desiring to advance their education. This report is based on data that comes directly from the schools of nursing annual reports submitted to LSBN by Louisiana's undergraduate and graduate nursing programs. The report was released in April 2025.

Additionally, in 2025, the Louisiana Center for Nursing launched the eighth biennial Newly Licensed Registered Nurse (NLRN) Survey. This survey tracks employment trends, challenges, and opportunities reported to NLRNs in Louisiana, offering valuable information to employers and nurse educators. The data helps inform strategies for easing the transition from academic training to professional practice, as well as improving retention rates for new nurses. The findings will be published in 2026.

NURSING EDUCATION CAPACITY IN LOUISIANA 2025

The Louisiana State Board of Nursing (LSBN) is mandated to closely monitor all nursing programs in the state that prepare nursing students for initial licensure as a registered nurse (RN), as well as those graduate programs that prepare RNs as advanced practice registered nurses (APRNs). It is the responsibility of LSBN to ensure that these programs are preparing safe and effective practitioners to care for the citizens of Louisiana. Deans and Directors of pre-RN licensure programs in Louisiana must submit an annual report to LSBN at the beginning of each year to demonstrate ongoing compliance with all rules and regulations related to nursing education. Information such as the number of applicants accepted into the programs each year, the number of students enrolled in clinical nursing courses, the number of graduates, and the qualifications of faculty teaching in the programs is used to determine nursing education capacity. An analysis of the data obtained from the 2025 annual reports submitted by undergraduate and graduate nursing programs in Louisiana was used to develop the 2025 Nursing Education Capacity Report. Please note that this year is the fourth year that the data was collected on a calendar year (January to December).

Pre-RN Licensure Programs in Louisiana

LSBN approved 33 pre-RN licensure programs during the 2025 report year that prepare students to become candidates for initial RN licensure in Louisiana: one diploma program, 13 associate of science in nursing (ASN) programs, and 19 baccalaureate in nursing (BSN) programs (Table 12).

Table 12. Pre-RN Licensure Programs in LA (2025)

Program Type	No. of Programs	% of Total Programs
Diploma <ul style="list-style-type: none"> • Baton Rouge General Medical Center 	1	3.0%
Associate Degree <ul style="list-style-type: none"> • Baton Rouge Community College • Bossier Parish Community College • Delgado Community College • Fletcher Technical Community College • Louisiana Delta Community College • LSU at Alexandria • LSU at Eunice • Louisiana Tech University • Northshore Technical Community College • Northwestern State University of Louisiana • South Louisiana Community College • Southern University at Shreveport • SOWELA Technical Community College 	13	39.4%
Baccalaureate Degree <ul style="list-style-type: none"> • Chamberlain University • Dillard University • Franciscan Missionaries of Our Lady University (Formerly Our Lady of the Lake) • Grambling State University • Herzing University • Louisiana Christian University (Formerly Louisiana College) • LSU Health New Orleans • Loyola University • McNeese State University • Nicholls State University • Northwestern State University of Louisiana • Southeastern Louisiana University • Southern University at Baton Rouge • Southern University at New Orleans • Tulane University • University of Holy Cross • University of Louisiana Lafayette • University of Louisiana Monroe • William Carey University 	19	57.6%
Total No. of Pre-RN Programs	33	100%

Applicants and Admissions to Pre-RN Licensure Programs in Louisiana

The number of qualified applicants to pre-RN licensure programs in Louisiana rose by 16% in 2025, matching the increase seen in 2024 (Table 13). Over the last four years (2022-2025) there has been a 29% increase in the number of students applying for admission to Louisiana’s pre-RN licensure programs. In the current report year, 77% (4,326) of the 5,645 qualified applicants were admitted to Louisiana’s pre-RN licensure programs, which represents a 9% increase in number. Approximately 23% (1,319) of the qualified applicants were denied admission to Louisiana’s pre-RN licensure programs in

2025 compared to 924 in 2024, which represents a 43% increase in the number of qualified applicants denied admission (see Appendix B2 for a summary report of applicants and admissions to pre-RN Licensure programs and Appendix B3 for a breakdown of applicants and admissions by programs).

Table 13. Applicants and Admissions for Pre-RN Licensure Programs in LA (2022-2025)

Report Year	Total No. Qualified Applicants	No. and % of Qualified Applicants Admitted to Pre-RN Licensure Programs		No. and % of Qualified Applicants Not Admitted to Pre-RN Licensure Programs	
	No.	No.	%	No.	%
2025	5,645	4,326	77%	1,319	23%
2024	4,879	3,955	81%	924	19%
2023	4,224	3,626	86%	598	14%
2022	4,363	3,545	81%	818	19%
1 & 4 Year Variance	↑16% / ↑29%	↑9% / ↑22%		↑43% / ↑61%	

Applicants and Admissions to Pre-RN Licensure Programs in Louisiana by Program Type for the 2025 Annual Report Year

Forty-seven percent (47%) of the 5,645 qualified applicants applied to BSN programs, which represents a 3-percentage point decrease when compared to the previous year (50%). Forty-nine percent of the qualified applicants applied to ASN programs, and 3% applied to Louisiana’s only diploma program in 2025. As seen in Table 13a, approximately 91% (2,433) of the 2,680 qualified applicants applying to BSN programs were admitted and 64% (1,785) of the 2,771 qualified applicants applying to ASN programs were admitted in 2025.

Table 13a. Applicants and Admissions for Pre-RN Licensure Programs in Louisiana by Program Type (2025)

Applicants 2025	Diploma	Associate Degree	Baccalaureate
No. of Qualified Applicants (Total = 5,645)	194 (3%)	2,771 (49%)	2,680 (47%)
No. of Qualified Applicants Admitted (Total = 4,326)	108	1,785	2,433
% of Qualified Applicants Admitted	56%	64%	91%
No. of Qualified Applicants Not Admitted (Total = 1,319)	86	986	247
% of Qualified Applicants Not Admitted	44%	36%	9%

As depicted in Table 13b, when compared to the previous report year, the number of students admitted to ASN and BSN programs increased by 6% and 11%, respectively.

Table 13b. Admissions to Pre-RN Licensure Programs in LA (2022-2025)

Report Year	Diploma	Associate	Baccalaureate
2025	108	1,785	2,433
2024	89	1,682	2,184
2023	78	1,451	2,097
2022	75	1,360	2,110
1 & 4 Year Variance	↑21% / ↑44%	↑6% / ↑31%	↑11% / ↑15%

Reasons Why Qualified Applicants Were Not Admitted to Pre-RN Licensure Programs (2025 Annual Report Year)

During the current report year, non-competitive faculty salary is the major contributing factor as to why qualified applicants were not admitted to Louisiana’s nursing programs (Table 14). Lack of a sufficient number of budgeted faculty positions not available, qualified faculty not available and lack of clinical specialty sites ranked number two, three and four, respectively. Other factors contributing to Louisiana’s pre-RN programs’ inability to admit qualified students included clinical placement sites not available, classroom space not available, and skills lab space not available. The American Association of Colleges of Nursing’s (AACN, 2025) report on *2024-2025 Enrollment and Graduations in Baccalaureate and Graduate Programs in Nursing* identifies insufficient number of faculty, clinical sites, classroom space, clinical preceptors, and budget constraints as the primary barriers for qualified applicants not being offered admission. U.S. nursing schools turned away 80,162 qualified applications from baccalaureate and graduate nursing programs in 2024.

Table 14. Reasons Why Qualified Applicants Were Not Admitted to Pre-RN Licensure Programs in LA (2025)

Rank	Reason Why Qualified Applicants Are Not Admitted to Pre-RN Licensure Programs in Louisiana
No. 1	Faculty Salary Not Competitive
No. 2	Budgeted Faculty Positions Not Available
No. 3	Qualified Faculty Not Available
No. 4	Lack of clinical specialty sites

Enrollment in Pre-RN Licensure Programs in Louisiana

In the current report year, 15,288 students enrolled in post-secondary education settings in Louisiana declared nursing as their major (Table 15), which reflects a 1% increase in number. The number of students enrolled in clinical nursing courses increased by 11% (6%↑ in 2023-2024). Between 2022 and 2025, there was a 17% increase in the number of students enrolled in clinical nursing courses (see Appendix B2 for a summary report on enrollments in pre-RN Licensure programs).

Table 15. Enrollment in Pre-RN Licensure Programs in LA (2022-2025)

Report Year	Enrollment (All Nursing Majors)	Enrollment in Clinical Nursing Courses
2025	15,288	7,796
2024	15,099	6,990
2023	11,963	6,617
2022	13,284	6,672
1 & 4 Year Variance	↑1% / ↑15%	↑11% / ↑17%

In 2025, 61% of the students enrolled in clinical nursing courses were enrolled in baccalaureate programs. Over a third (36%) of the students were enrolled in associate programs, and three percent were enrolled in the state’s only diploma program (Table 16). Enrollment in BSN programs increased by 11% between 2024-2025, compared to a 2% increase in 2023-2024. There was an 8% increase between 2024-2025 in the number of students enrolled in AD programs compared to an increase of 12% in 2023-2024.

Table 16. Pre-RN Licensure Programs Enrollment in LA (2022-2025)

Report Year	Diploma		Associate		Baccalaureate		Total
	No.	%	No.	%	No.	%	
2025	195	3%	2,817	36%	4,784	61%	7,796
2024	83	1%	2,604	37%	4,303	62%	6,990
2023	66	1%	2,333	35%	4,218	64%	6,617
2022	148	2%	2,337	35%	4,187	63%	6,672
1 & 4 Year Variance	↑135% / ↑32%		↑8% / ↑21%		↑11% / ↑14%		↑12% / ↑17%

Gender of Students Enrolled in Pre-RN Licensure Programs in Louisiana

Females represent 88% of the students enrolled in pre-RN licensure programs in Louisiana in 2025, while males represented 12%. There was a 14% increase in the number of males enrolled (Table 17).

Table 17. Gender of Students Enrolled in Pre-RN Licensure Programs in LA (2022-2025)

Report Year	Male		Female		Total RN Students
	#	%	#	%	
2025	915	12%	6,881	88%	7,796
2024	801	11%	6,189	89%	6,990
2023	729	11%	5,888	89%	6,617
2022	745	11%	5,927	89%	6,672
1 & 4 Year Variance	↑14% / ↑23%		↑11% / ↑16%		↑12% / ↑17%

Racial Distribution of Students Enrolled in Pre-RN Licensure Programs in Louisiana

In 2025, 52% of the students enrolled in pre-RN licensure programs in Louisiana were minorities (Table 18). There was a 19% increase in the number of Black/African American students, an 8% increase in the number of Hispanic/Latino students, a 25% increase in the number of Asian students, and a 2% increase in those reporting *Other*. Of the 415 students that were included in the category of *Other*, 43 self-reported that they were American Indian/Alaska Native and 17 were Native Hawaiian/Pacific Islander.

Table 18. Racial Distribution of Students Enrolled in Pre-RN Licensure Programs in LA (2022-2025)

Report Year	White		Black/African American		Hispanic/Latino		Asian		Other	
	#	%	#	%	#	%	#	%	#	%
2025	3,740	48%	3,007	39%	397	5%	237	3%	415	5%
2024	3,492	50%	2,533	36%	368	5%	189	3%	408	6%
2023	3,521	53%	2,226	34%	332	5%	179	3%	359	5%
2022	3,743	56%	2,089	31%	349	5%	182	3%	309	5%
1 & 4 Year Variance	↑7% / ↓0.1%		↑19% / ↑44%		↑8% / ↑14%		↑25% / ↑30%		↑2% / ↑34%	

Note: American Indian/Alaska Native (43), Native Hawaiian/Pacific Islander (17) were included in *Other*
Total = 7,796.

Age of Students enrolled in Pre-RN Licensure Programs in Louisiana

Sixty-three percent (63%) of the students enrolled in pre-RN licensure programs in Louisiana in the current report year were between 17 and 25 years of age and 30% were between 26 and 40 years of age. There was a 16% increase in the number of students between 21 and 25 years of age that were enrolled in pre-RN programs compared to a 2% decrease noted in the previous report year. (Table 19)

Table 19. Age of Students Enrolled in Pre-RN Licensure Programs in LA (2022-2025)

Report Year	17-20		21-25		26-30		31-40		41-50		51-60		>61	
	#	%	#	%	#	%	#	%	#	%	#	%	#	%
2025	1,380	18%	3,527	45%	1,057	14%	1,207	16%	477	6%	143	2%	5	0.1%
2024	1,238	18%	3,038	43%	1,018	15%	1,125	16%	434	6%	128	2%	9	0.1%
2023	938	14%	3,087	47%	1,013	15%	1,046	16%	424	6%	102	2%	7	0.1%
2022	1,029	15%	3,080	46%	1,008	15%	1,067	16%	407	6%	75	1%	6	0.09%
1 & 4 Year Variance	↑11% / ↑34%		↑16% / ↑15%		↑4% / ↑5%		↑7% / ↑13%		↑10% / ↑17%		↑12% / ↑91%		↓44% / ↓17%	

Note: Total=7,796

Prior Education Status of Students Enrolled in Pre-RN Licensure Programs in Louisiana (2022-2025)

There was a 4% decrease in the number of LPNs enrolled in clinical nursing courses in pre-RN licensure programs in Louisiana between 2024-2025 and a 3% increase over the past four years. The number of students from other health related fields decreased by 39% during the 2025 report year and increased by 11% over the last four years. Approximately 21% (1,607) of the students enrolled in clinical nursing courses in 2025 had a degree in another field (804), were LPNs (599), or had prior education in another health field (204) (Table 20).

Table 20. Prior Education Status of Students Enrolled in Pre-RN Licensure Programs in Louisiana (2022-2025)

Year	Practical Nurses		Non-Traditional Students				Total
	No.	%	Other Health Field	%	Other Degree	%	Enrolled in Clinical
	No.	%	No.	%	No.	%	Total No.
2025	599	7.7	204	2.6	804	10.3	7,796
2024	627	9.0	333	4.8	752	10.8	6,990
2023	537	8.1	176	2.7	807	12.2	6,617
2022	584	8.8	183	2.7	735	11.0	6,672
1 & 4 Year Variance	↓4% / ↑3%		↓39% / ↑11%		↑7% / ↑9%		↑12% / ↑17%

Graduates from Pre-RN Licensure Programs in Louisiana

The number of graduates from Louisiana’s pre-RN licensure programs increased by 7% from 2024-2025. Between 2022 and 2025, there was an overall 12% increase in the number of graduates. Fifty-three percent (1,419) of the 2,672 graduates in the 2025 report year were from BSN programs, and 44% (1,174) were from ASN programs (Table 21). Over the last four years, there has been a 29% increase in the number of graduates from ASN programs, less than 1% decrease in the number of graduates from BSN programs, and a 34% increase in graduates from the diploma program (see Appendix B2 for a summary report of RN graduates and Appendix B8 for the number of RN graduates per program for 2025).

Table 21. Graduates of Pre-RN Licensure Programs in LA According to Program Type (2022-2025)

Report Year	Total No. of RN Graduates from Pre-RN Licensure Programs	Diploma		Associate		Baccalaureate	
		No.	%	No.	%	No.	%
2025	2,672	79	3%	1,174	44%	1,419	53%
2024	2,489	63	3%	1,005	40%	1,421	57%
2023	2,608	61	2%	1,136	44%	1,411	54%
2022	2,390	59	2%	908	38%	1,423	60%
1 & 4 Year Variance	↑7% / ↑12%	↑25% / ↑34%		↑17% / ↑29%		↓0.1% / ↓0.3%	

Non-Traditional Graduates from Louisiana’s Pre-RN Licensure Programs

There was a 24% increase in the number of graduates from LPN to ASN programs, a 10% decrease in the number of graduates from LPN to BSN programs, and a 23% increase in the number graduating from accelerated programs (Table 22).

Table 22. Non-Traditional Graduates from Louisiana’s Pre-RN Programs

Report Year	LPN to Diploma	LPN to ASN	LPN to BSN	Accelerated BSN
2025	4	264	35	158
2024	1	213	39	128
2023	12	184	31	126
2022	2	209	35	100
1 & 4 Year Variance	↑300% / ↑100%	↑24% / ↑26%	↓10% / 0%	↑23% / ↑58%

Gender, Racial Distribution, and Age of Graduates from Pre-RN Licensure Programs in Louisiana

According to Table 23, 89% of the graduates from Louisiana’s pre-RN licensure programs were females and 11% were males.

Table 23. Gender of Graduates from Pre-RN Licensure Programs in Louisiana (2025)

Report Year	Male		Female		Total RN Students
	#	%	#	%	
Diploma	4	5%	75	95%	79
Associate	136	12%	1,038	88%	1,174
Baccalaureate	160	11%	1,259	89%	1,419
Total	300	11%	2,372	89%	2,672

In 2025, 43% (1,145) of the graduates from pre-RN licensure programs in Louisiana were minorities which reflects a 12% increase in the number of minority graduates when compared to 2024 (1,025 minority graduates) (Table 24).

Table 24. Racial Distribution of Graduates from Pre-RN Licensure Programs in Louisiana (2025)

Report Year	White		Black/African American		Hispanic/Latino		Asian		Other	
	#	%	#	%	#	%	#	%	#	%
Diploma Total = 79	37	47%	37	47%	1	1%	3	4%	1	1%
Associate Total = 1,174	692	59%	384	33%	39	3%	13	1%	46	4%
Baccalaureate Total = 1,419	798	56%	419	30%	96	7%	35	2%	71	5%
Total = 2,672	1,527	57%	840	31%	136	5%	51	2%	118	4%

Note: American Indian/Alaska Native (11) and Native Hawaiian/Pacific Islander (7) were included in *Other*.

Forty-eight percent (48%) of the graduates from pre-RN programs in Louisiana in 2025 were between 21 and 25 years of age, followed by 20% that were between 26 and 30 years and 19% that were between 31 and 40 years. Sixty-three percent (63%) of the graduates from BSN programs were between 21 and 25 years of age compared to 31% of the ASN graduates and 42% of the diploma graduates (Table 25).

Table 25. Age of Graduates from Pre-RN Licensure Programs in LA (2025)

Report Year	17-20		21-25		26-30		31-40		41-50		51-60		>61	
	#	%	#	%	#	%	#	%	#	%	#	%	#	%
Diploma Total = 79	0	0%	33	42%	18	23%	21	27%	7	9%	0	0%	0	0%
Associate Total = 1,174	24	2%	364	31%	280	24%	327	28%	146	12%	32	3%	1	0.1%
Baccalaureate Total = 1,419	18	1%	895	63%	238	17%	160	11%	79	6%	28	2%	1	0.1%
Total = 2,672	42	2%	1,292	48%	536	20%	508	19%	232	9%	60	2%	2	0.1%

Pre-RN Licensure Students in Louisiana Performance on the NCLEX-RN

In 2025, there were a total of 2,593 RN candidates (2,514 in 2024) from nursing education programs in Louisiana that sat for the National Council Licensure Examination for Registered Nurses exam (NCLEX-RN) for the first time, which represents a 3% increase in number. The passage rate on the NCLEX-RN Exam on the first take for these candidates was 89.51% (Table 26). The overall national passage rate on the NCLEX-RN for 2025 was 86.71% compared to 91.16% in 2024 (see Appendix B1 for NCLEX-RN results by program). The passage rate on the NCLEX-RN for graduates from Louisiana’s pre-RN licensure programs continues to exceed that of the nation.

Table 26. Performance of First-Time Candidates Graduating from Pre-RN Licensure Programs in LA on NCLEX-RN (January 1, 2025 – December 31, 2025)

Program Type	No. Taking	No. Passing	% Passing
Diploma	79	66	83.54%
Associate Degree	1,127	1,001	88.82%
Baccalaureate Degree	1,387	1,254	90.41%
Grand Total	2,593	2,321	89.51%

Note: The National Average Passage Rate on the NCLEX-RN Examination was 86.71% for 2025.

There was an 18% increase in the number of graduates passing the NCLEX-RN exam from the states only diploma program. The number of ASN graduates passing the NCLEX-RN exam increased by 6% while the number of BSN graduates passing the NLCEX-RN exam decreased by 7% (Table 27). The overall passage rate for Louisiana’s graduates has decreased by four percent from 2024-2025.

Table 27. Summary Performance of First-Time Candidates Graduating from Pre-RN Licensure Programs in Louisiana on NCLEX-RN (2021-2025)

Report Year	Diploma		Associate		Baccalaureate		Passage Rate for LA %	Passage Rate for the Nation %
	No. Passing	% Passing	No. Passing	% Passing	No. Passing	% Passing		
2025	66	83.54%	1,001	88.82%	1,254	90.41%	89.51%	86.71%
2024	56	90.32%	945	92.20%	1,350	94.60%	93.52%	91.16%
2023	60	96.77%	916	90.07%	1,304	94.84%	92.91%	88.56%
2022	44	77.19%	784	84.48%	1,289	88.29%	86.58%	79.90%
2021	16	88.89%	832	86.76%	1,297	90.38%	88.93%	82.48%
1- & 5-Year Variance	↑18% / ↑313%		↑6% / ↑20%		↓7% / ↓3%		↓4% / ↑1%	↓5% / ↑5%

Faculty Teaching in Pre-RN Licensure Programs in Louisiana

To gauge the current level of demand for nurse faculty, data was obtained from the 2025 Annual Reports submitted to LSBN by the Deans and Directors of pre-RN licensure programs and APRN programs in the state of Louisiana. Deans and Directors were asked to report on the number of filled and vacant faculty positions in their pre-RN licensure programs as of December 31, 2025. These numbers are depicted by program type and full vs. part-time positions in Table 28. The number of full and part-time faculty positions fluctuate from year to year depending on the number of budgeted faculty positions, the availability of qualified faculty, and the school’s need to fill full-time positions with part-time faculty.

There was a total of 549 budgeted full-time nurse faculty positions reported by Louisiana’s pre-RN licensure programs as of December 31, 2025 compared to 516 on December 31, 2024, which reflects a six percent increase in number from the previous year. There was a 16% increase in the number of part-time faculty positions filled in 2025 (459) compared to an 11% increase in 2024 (396). Forty-five (45) faculty positions were funded from grants, capitation funds, additional appointments, and/or other funding sources.

Table 28. Budgeted Nurse Faculty Positions in Pre-RN Licensure Programs in LA (2025)

Program Type	Faculty Positions		Nurse Faculty Positions Funded from other Sources	Number of Nurse Faculty Teaching in Louisiana’s Pre-RN Licensure Programs for the 2025 Report Year
	Full-time	Part-time /Adjunct		
Diploma (1)	6	8	0	14
ASN (13)	195	160	29	355
BSN (19)	348	291	16	639
Total (33)	549	459	45	1,008

Note: Faculty funded by other sources was not included when reporting the total number of budgeted faculty.

Vacant Nurse Faculty Positions

There was a total of 58 vacant nurse faculty positions reported by Deans and Directors in the current report year, compared to 46 in the previous report year, which represents a 26% increase in the number of vacant nurse faculty positions across the state (Table 29). Thirty-eight (38) or 65% of the vacant nurse faculty positions were reported by Louisiana’s BSN programs and 19 (33%) were reported by ASN programs. The number of vacant full-time faculty positions will often determine the number of part-time positions needed. Many schools do not budget positions for part-time instructors, instead they are hired as needed.

Table 29. Vacant Nurse Faculty Positions Pre-RN Licensure Programs in LA (2022-2025)

Program Type	2022	2023	2024	2025	1 & 4 Year Variance
Diploma	0	1	1	1	0% / ~
ASN	15	16	21	19	↓10% / ↑27%
BSN	36	24	24	38	↑58% / ↑6%
Total	51	41	46	58	↑26% / ↑14%

New Nurse Faculty Appointments, Exceptions and use of Preceptors

A total of 198 new faculty appointments were reported by pre-RN licensure programs during the 2025 report year which is an increase of 26% reported in 2024 (Table 30). New appointments included not only full-time faculty, but also part-time adjunct faculty that are hired for one or more semesters based on available funding. Fifty-nine percent (59%) of the new faculty appointments were for BSN programs, 40% were for ASN programs and 2% for the diploma program.

Faculty exceptions are granted to pre-RN licensure programs upon approval of the Board for a pre-approved time period. According to LSBN Rules and Regulations, Title 46, Part XLVII, Chapter 35, No. 3515 B.9, “Exceptions to the academic qualifications for undergraduate nurse faculty shall be justified and approved under board established guidelines. Exceptions, if granted by the board shall be: a. baccalaureate in nursing-prepared individuals who are not enrolled in a graduate program in nursing are limited to a maximum two calendar years after which they must be enrolled in a graduate nursing program; and b. baccalaureate in nursing-prepared individuals who are enrolled in a graduate program in nursing at the master’s and/or doctoral level shall be initially approved for two years in accordance with current board guidelines. Exceptions may be granted to each individual for a maximum of four years.”

The need for faculty exceptions is indicative of the lack of available qualified nurse faculty. The number of faculty exceptions requested by pre-RN licensure programs went from 104 in 2024, to 119 in 2025, which represents a 14% increase in the number of faculty exceptions utilized by pre-RN licensure programs which is lower when compared to the 39% increase reported in the previous report year. There was a 5% decrease in the number of faculty exceptions reported by ASN programs in 2025 compared to a 51% increase in the previous report year. Rule 3515.B.9 was amended and finalized on May 20, 2023 which removed a 20% cap on faculty exceptions for BSN-prepared nurses with 2 years of nursing experience. This has allowed LSBN to utilize more BSN-prepared nurses as adjunct clinical faculty for more than two years before they enroll in a graduate Master of Science in Nursing program.

Preceptors are valuable resources in nursing education. Preceptors are used only during the last two academic semesters of a baccalaureate program and during one of the last two semesters of a diploma or associate degree program (LSBN Rules and Regulations, Title 46, XLVII, Chapter 35, No.3543 E.1.a). In an effort to meet the schools of nursing needs for qualified preceptors, rules were promulgated in June 2016 which “allows an individual RN, who does not possess a BSN, to be utilized as a preceptor provided that the RN has had no less than three years’ experience as an RN with a minimum of one year in the clinical area in which the experience occurs and has the requisite skills to guide the student to meet the desired course outcomes for the specific clinical experiences”(LSBN Rules and Regulations, Title 46, XLVII, Chapter 35, No.3543 G.2.c). In preceptor-student relationships, nursing faculty retain the responsibility for selecting, guiding, and evaluating student learning experiences with input from the preceptor (LSBN Rules and Regulations, Title 46, XLVII, Chapter 35, No.3543 A). In the 2025 report year, there were a total of 1,532 preceptors used by pre-RN licensure programs, compared to 1,296 in 2024 which reflects an 18% increase in the number of preceptors used by pre-RN licensure programs over the last year.

Table 30. New Faculty Appointments, Exceptions and use of Preceptors (2025)

Program Type	No. of New Faculty Appointments	No. of Faculty Exceptions	Preceptors
Diploma (1)	3 (2%)	0 (0%)	30 (2%)
ASN (13)	79 (40%)	59 (50%)	255 (17%)
BSN (19)	116 (59%)	60 (50%)	1,247 (81%)
Total (33)	198	119	1,532

Nursing Faculty Attrition

Faculty attrition due to faculty leave, resignation, retirement, death or termination contributes to the ongoing demand for nurse faculty (Table 31). In 2025, a total of 9 faculty were on leave compared to 18 in 2024, a 50% decrease. There was a total of 103 resignations in 2025, compared to 92 in 2024, a 12% increase; 18 retirements (19 in 2024), a 5% decrease; and 11 terminations (3 in 2024), a 267% increase.

Table 31. Faculty Attrition: Leave, Resignation, and Retirement/Termination (2025)

Program Type	No. of Faculty on Leave	No. of Faculty Resignations	No. of Faculty Retirements/Terminations/Deaths
Diploma (1)	0	2	0 Retirements/ 2 Terminations /0 Deaths
ASN (13)	3	36	6 Retirements/ 4 Terminations /1 Deaths
BSN (19)	6	65	12 Retirements/ 5 Terminations/0 Death
Total (33)	9	103	18 Retirements/ 11 Terminations/ 1 Deaths

Educational Preparation of Nurse Faculty

According to Table 32, in 2025, approximately 26% (289) of the faculty teaching in pre-RN licensure programs were prepared at the doctoral level, a 9% increase in number (265 in 2024); 63% (708) were master’s prepared, an 8% increase in number (654 in 2024); and 11% (119) reported that their highest degree in nursing was a baccalaureate degree which represents a 15% increase in number when compared to the previous report year (103 in 2024).

Table 32. Educational Preparation of Faculty (2025)

Program Type	No. of Doctorally Prepared Faculty	No. of Master’s Prepared Faculty	No. of BSN Faculty Exceptions
Diploma (1)	4	14	0
ASN (13)	80	253	59
BSN (19)	205	441	60
Total (33)	289 (26%)	708 (63%)	119 (11%)

Note: Total = 1,116

The number of faculty holding a DNP that taught in pre-RN licensure programs in Louisiana in 2025 increased by 14% compared to the previous year (Table 33). The number of faculty with a PhD in Nursing increased in number by 8% compared to the previous year. The number of faculty with a PhD in a related field increased by 2% and the number of faculty with a DNS decreased by 33% in the current report year. Over half (60%) of the doctoral prepared faculty teaching in Louisiana’s pre-RN

programs have the DNP as their terminal degree. Twenty-two percent of the faculty with a doctoral degree had a PhD in nursing.

Table 33. Doctoral Prepared Faculty Teaching in Pre-RN Licensure Programs

	DNS	DNP	PhD Nursing	PhD Related Field
2025	6	173	65	45
2024	9	152	60	44
2023	13	146	58	40
2022	11	144	69	36
1 & 4 Year Variance	↓33% / ↓45%	↑14% / ↑20%	↑8% / ↓6%	↑2% / ↑25%

Note: Total = 289

Board of Regents Nursing Faculty Stipends

There was a 54% decrease in the number of nurse faculty receiving the Board of Regents (BOR) Nurse Faculty stipend between 2022-2025 that were pursuing a doctoral degree and a 67% decrease in those pursuing a Masters’ degree. As seen in Table 34, the number of faculty that were previous BOR stipend recipients decreased by 2% when compared to the previous report year.

Table 34. Board of Regents Faculty Stipend Recipients (Current and Previous)

BOR Stipend Recipients	Current Recipients Masters	Current Recipients Doctoral	Faculty that were Previous BOR Stipends Recipients (Masters and Doctorate)
2025	1	11	51
2024	0	10	52
2023	0	17	67
2022	3	24	75
1 & 4 Year Variance	~/ ↓67%	↑10% / ↓54%	↓2% / ↓32%

Nurse Faculty Salaries

According to the American Association of Colleges of Nursing (AACN), faculty shortages at nursing schools across the country are limiting student capacity at a time when the need for professional registered nurses continues to grow (2024). As stated previously, the inability to attract qualified nurse faculty due to noncompetitive salaries has consistently been cited as one of the major contributing factors as to why hundreds of qualified student applicants are not admitted to Louisiana’s pre-RN licensure programs each year. Noncompetitive salaries lead to an inadequate number of filled nurse faculty positions, which is cited as a major reason for denying admission to qualified students (AACN, 2022).

According to AACN, average salaries for doctorally prepared faculty are \$155,312 for professors, \$123,379 for associate professors, \$108,278 for assistant professors, and \$97,418 for instructors. Across the same four roles, master’s prepared faculty earn on average \$104,520, \$93,437, \$87,772, and \$87,587, respectively (2025). The mean salaries for all levels of nursing faculty in Louisiana remain below national means for four-year public colleges (Table 35). According to the Bureau of Labor Statistics (2024), the median salary for Nurse Practitioners is \$129,210. The higher compensation in clinical and private-sector settings is luring current and potential nurse educators away from teaching

(AACN, 2021). Joynt and Kimball (2008), authors of a white paper entitled *Blowing Open the Bottleneck: Designing New Approaches to Increase Nurse Education Capacity*, stated, “While nursing faculty compensation adjustments alone will not solve the nursing education capacity problem, the value of the educators must be acknowledged and rewarded in order to move forward” (p.12).

Table 35. Mean Salaries for Nursing Faculty (2022-2025)

Faculty Role/Rank	Instructor	Assistant Professor	Associate Professor	Professor
2025	\$63,642	\$73,238	\$84,892	\$89,423
2024	\$64,707	\$71,728	\$84,621	\$91,407
2023	\$67,980	\$72,089	\$79,106	\$96,560
2022	\$63,010	\$69,412	\$77,011	\$89,442
1 & 4 Year Variance	↓2% / ↑1%	↑2% / ↑6%	↑0.3% / ↑10%	↓2% / ↓0.02%

Note: Salaries in terms of length of appointment (9-month, 10-month, or 12-month) was not available.

Nurse Faculty in Louisiana Demographics

Age

In 2025, nearly half (44%) of the nurse faculty in Louisiana were 51 and older (Table 36). Twenty percent (197) of the faculty teaching in Louisiana’s pre-RN licensure programs were 61+ years. According to AACN's report on *Salaries of Instructional and Administrative Nursing Faculty in Baccalaureate and Graduate Programs in Nursing, 2023-2024 Nursing Faculty Shortage Fact Sheet*, the average age of doctoral-prepared nurse faculty holding the ranks of professor, associate professor, and assistant professor were 61.2, 55.6 and 49.6 years, respectively. For master's degree-prepared nurse faculty, the average ages for professors, associate professors, and assistant professors were 55.0, 54.7, and 47.5 years, respectively (AACN, 2024).

Table 36. Age Ranges for Nurse Faculty (2022-2025)

Age Category	No. of Faculty 2022		No. of Faculty 2023		No. of Faculty 2024		No. of Faculty 2025		1 & 4 Year Variance
	#	%	#	%	#	%	#	%	
20-30	24	2%	27	3%	30	3%	38	4%	↑27% / ↑58%
31-40	214	23%	211	23%	195	21%	224	22%	↑15% / ↑5%
41-50	260	28%	252	28%	274	30%	298	30%	↑9% / ↑15%
51-60	244	26%	246	27%	224	24%	242	24%	↑8% / ↓1%
61-65	107	11%	88	10%	104	11%	103	10%	↓1% / ↓4%
66-70	62	7%	68	7%	62	7%	60	6%	↓3% / ↓3%
> 70	26	3%	23	3%	30	3%	34	3%	↑13% / ↑31%
Total Faculty Reporting Age	937	100%	915	100%	919	100%	999	100%	↑9% / ↑7%

Gender

Although only 8% of the nurse faculty teaching in Louisiana’s pre-RN programs were males, there was a 98% increase in the number of male nurse faculty over the past four years (Table 37).

Table 37. Gender of Nurse Faculty Teaching in Pre-RN Licensure Programs in LA (2022-2025)

Report Year	Male		Female		Total Number of Nurse Faculty
	#	%	#	%	
2025	83	8%	916	92%	999
2024	93	10%	826	90%	919
2023	53	6%	862	94%	915
2022	42	4%	895	96%	937
1 & 4 Year Variance	↓11% / ↑98%		↑11% / ↑2%		↑9% / ↑7%

Ethnicity

Approximately 36% (364) of the faculty teaching in Louisiana’s pre-RN licensure programs were minorities (Table 38) which is a 17% increase in number when compared to the previous report year (312 minority nurse faculty in 2024). A 140% increase in Hispanic/Latino nurse faculty, a 75% increase in Asian nurse faculty, and a 15% increase in the number of Black/African American nurse faculty contributed to the overall increase in the number of minority nurse faculty.

Table 38. Racial Distribution of Nurse Faculty Teaching in Pre-RN Licensure Programs in LA (2022-2025)

Report Year	White		Black/African American		Hispanic/ Latino		Asian		Other	
	#	%	#	%	#	%	#	%	#	%
2025	635	64%	322	32%	12	1%	7	0.7%	23	2%
2024	607	66%	279	30%	5	0.5%	4	0.4%	24	3%
2023	601	66%	285	31%	4	0.4%	6	0.7%	19	2%
2022	605	65%	311	33%	6	0.6%	7	0.7%	8	0.9%
1 & 4 Year Variance	↑5% / ↑5%		↑15% / ↑4%		↑140% / ↑100%		↑75% / 0%		↓4% / ↑188%	

Note: Total=999

Graduate Nursing Programs in Louisiana

Advanced Practice Registered Nurse (APRN) Education in Louisiana

Graduate Nursing Programs across the state afford RNs in Louisiana the opportunity to become an advanced practice registered nurse (APRN) in four roles: Nurse Practitioner, Clinical Nurse Specialist, Certified Nurse Midwife, and Certified Registered Nurse Anesthetist. Table 39 provides a listing of the types of roles and specialty areas offered by graduate nursing programs in Louisiana. A list of LSBN Approved Graduate Nursing Programs can also be found in Appendix A.

Table 39. Advanced Practice Registered Nurse Programs in Louisiana (2025)

Master’s Program	Specialties	Roles*
Franciscan Missionaries of Our Lady University	Across the Life Span Family	CRNA NP
Grambling State University	Family Pediatric - Primary Care	NP NP
Intercollegiate Consortium for a Master of Science in Nursing (ICMSN) • McNeese State University	Psychiatric Mental Health Family	NP NP

which reflects a 19% increase in the number of students admitted to CRNA programs. There were 10 (1%) students admitted to CNM programs. There were 3 (0.3%) students admitted to CNS programs.

Table 40. Admission to APRN Programs in LA (2022-2025)

Report Year	No. of Students Admitted to NP Programs	No. of Students Admitted to CNS Programs	No. of Students Admitted to CNM Programs	No. of Students Admitted to CRNA Programs	Total No. of Students Admitted to APRN Programs
2025	695 (80%)	3 (0.3%)	10 (1%)	159 (18%)	867
2024	579 (81%)	0 (0%)	4 (1%)	134 (19%)	717
2023	572 (79%)	0 (0%)	16 (2%)	138 (19%)	726
2022	425 (78%)	60 (11%)	0 (0%)	58 (11%)	543
1 & 4 Year Variance	↑20% / ↑64%	~/ ↓95%	↑150% / ~	↑19% / ↑174	↑21% / ↑60%

Enrollment in APRN Programs in Louisiana

There was an overall seven percent increase in the number of students enrolled in Louisiana’s APRN programs during the current report year: 73% of students were enrolled in NP programs, 25% in CRNA programs, 1% in CNM programs, and 0.2% in CNS programs (Table 41).

Table 41. Enrollment in APRN Programs in LA (2022-2025)

Report Year	No. of Students Enrolled in NP Programs	No. Students Enrolled in CNS Programs	No. Students Enrolled in CNM Programs	No. Students Enrolled in CRNA Programs	Total No. Students Enrolled in APRN Programs
2025	1,167 (73%)	3 (0.2%)	18 (1%)	405 (25%)	1,593
2024	1,078 (73%)	0 (0%)	24 (2%)	380 (25%)	1,482
2023	1,176 (77%)	0 (0%)	12 (1%)	341 (22%)	1,529
2022	1,138 (79%)	1 (0.1%)	0 (0%)	294 (21%)	1,433
1 & 4 Year Variance	↑8% / ↑3%	~/ ↑200%	↓25% / ~	↑7% / ↑38%	↑7% / ↑11%

Gender of Students Enrolled in APRN Programs in Louisiana

The vast majority (81%) of the students enrolled in APRN programs in Louisiana continue to be females (Table 42), which is in line with the previous years’ findings. It should be noted, however, that the total percentage of males in APRN programs is 19% compared to 12% males licensed as RNs in the state.

Table 42. Gender of Students Enrolled in APRN Programs in Louisiana (2022-2025)

Report Year	Male		Female		Total APRN Students
	#	%	#	%	
2025	309	19%	1,284	81%	1,593
2024	272	18%	1,210	82%	1,482
2023	237	16%	1,292	84%	1,529
2022	217	15%	1,216	85%	1,433
1 & 4 Year Variance	↑14% / ↑42%		↑6% / ↑6%		↑7% / ↑11%

Ethnicity of Students Enrolled in APRN Programs in Louisiana

In 2025, approximately 36% of the students enrolled in Louisiana’s APRN programs were minorities compared to 39% in 2024 (Table 43). Since 2022, there has been a 14% increase in the number of

Hispanic/Latino students, and a 31% increase in the number of *Other* students enrolled in Louisiana’s APRN programs.

Table 43. Ethnicity of Students Enrolled in APRN Programs in LA (2022-2025)

Report Year	White		Black/African American		Hispanic / Latino		Asian		Other	
	#	%	#	%	#	%	#	%	#	%
2025	1,022	64%	361	23%	58	4%	35	2%	117	7%
2024	902	61%	392	26%	51	3%	48	3%	89	6%
2023	970	63%	391	26%	48	3%	49	3%	71	5%
2022	907	63%	357	25%	55	4%	58	4%	56	4%
1 & 4 Year Variance	↑13% / ↑13%		↓8% / ↑1%		↑14% / ↑5%		↓27% / ↓40%		↑31% / ↑109%	

Note: American Indian/Alaska Native (7) and Native Hawaiian/Pacific Islander (5) was included in *Other*. Total = 1,593.

Age of Students enrolled in APRN Programs in Louisiana

Approximately 35% (550) of the students enrolled in APRN programs in Louisiana during the 2025 report year were between 31 and 40 years of age and 38% (605) were between 26 and 30 years (Table 44). Over the last four years (2022-2025), there has been a 22% increase in the number between the ages of 26-30, and a 42% increase in the number of APRN students between 51-60 years of age.

Table 44. Age of Students Enrolled in APRN Programs in LA (2022-2025)

Report Year	17-20		21-25		26-30		31-40		41-50		51-60		>61	
	#	%	#	%	#	%	#	%	#	%	#	%	#	%
2025	0	0%	112	7%	605	38%	550	35%	241	15%	75	5%	10	0.6%
2024	0	0%	114	8%	536	36%	531	36%	236	16%	56	4%	9	0.6%
2023	0	0%	105	7%	515	34%	583	38%	252	16%	68	4%	6	0.4%
2022	0	0%	104	7%	494	34%	553	39%	223	16%	53	4%	6	0.4%
1 & 4 Year Variance	0% / 0%		↓2% / ↑8%		↑13% / ↑22%		↑4% / ↓0.5%		↑2% / ↑8%		↑34% / ↑42%		↑11% / ↑67%	

Note: Total = 1,593

Graduates from APRN Programs in Louisiana

In the 2025 report year, there were a total of 484 graduates from Louisiana’s APRN programs (Table 45), which represents a 13% increase in number when compared to the 429 graduates in the previous report year (2024). The majority of the graduates were from NP programs (75%), followed by CRNA programs (24%) and CNM programs (2%).

Table 45. Graduates from APRN Programs in Louisiana According to Program Type (2022-2025)

Report Year	Total No. of APRN Graduates	NP		CNS		CNM		CRNA	
		#	%	#	%	#	%	#	%
2025	484	362	75%	0	0%	8	2%	114	24%
2024	429	322	75%	0	0%	0	0%	107	25%
2023	419	331	79%	0	0%	0	0%	88	21%
2022	435	362	83%	0	0%	0	0%	73	17%
1 & 4 Year Variance	↑13% / ↑11%	↑12% / 0%		0% / 0%		~/~		↑7% / ↑56%	

Gender, Racial Distribution and Age of Graduates in Louisiana’s APRN Programs

In 2025, males represented 74 of the graduates from Louisiana’s APRN programs compared to 61 male graduates in 2024 (Table 46). Twenty-seven percent (31) of the CRNA graduates were males.

Table 46. Gender of Graduates from APRN Programs in Louisiana (2025)

APRN Role	Male		Female		Total APRN Graduates
	#	%	#	%	
NP	43	12%	319	88%	362
CNS	0	0%	0	0%	0
CNM	0	0%	8	100%	8
CRNA	31	27%	83	73%	114
Total	74	15%	410	85%	484

Thirty-six percent (173) of the graduates from APRN programs in Louisiana were minorities compared to 37% (157) in the previous report year (Table 47).

Table 47. Racial Distribution of Graduates from APRN Programs in Louisiana (2025)

Report Year	White		Black/African American		Hispanic/Latino		Asian		Other	
	#	%	#	%	#	%	#	%	#	%
NP Total = 362	230	64%	86	24%	5	1%	6	2%	35	10%
CNS Total = 0	0	0%	0	0%	0	0%	0	0%	0	0%
CNM Total = 8	1	13%	1	13%	0	0%	0	0%	6	75%
CRNA Total = 114	80	70%	26	23%	3	3%	3	3%	2	2%
Total = 484	311	64%	113	23%	8	2%	9	2%	43	9%

Note: American Indian/Alaska Native (3); Native Hawaiian/Pacific Islander (0) included in *Other*.

Forty-six percent (225) of the graduates from APRN programs in Louisiana were between 31 and 40 years of age and 27% (132) were between 26 and 30 years of age (Table 48). Fifty-three percent (60) of the CRNA graduates and 44% (161) of the NP graduates were between 31 and 40 years of age.

Table 48. Age of Graduates from APRN Programs in LA (2025)

Report Year	17-20		21-25		26-30		31-40		41-50		51-60		>61	
	#	%	#	%	#	%	#	%	#	%	#	%	#	%
NP Total = 362	0	0%	2	1%	77	21%	161	44%	99	27%	18	5%	5	1%
CNS Total = 0	0	0%	0	0%	0	0%	0	0%	0	0%	0	0%	0	0%
CNM Total = 8	0	0%	0	0%	3	38%	4	50%	1	13%	0	0%	0	0%
CRNA Total = 114	0	0%	1	1%	52	46%	60	53%	1	1%	0	0%	0	0%
Total = 484	0	0%	3	1%	132	27%	225	46%	101	21%	18	4%	5	1%

Performance of APRN Graduates on Certification Exams

Certification examinations taken by graduates from Louisiana’s APRN programs include, but are not limited to, the American Nurses Credentialing Center (ANCC), the American Academy of Nurse Practitioners (AANP), the Council on Certification for Nurse Anesthetists (CCNA), the National Certification Corporation (NCC), the Pediatric Nursing Certification Board (PNCB), and the American Association of Critical Care Nurses (AACCN). In 2025, 305 APRN candidates sat for their respective certification exams. Two hundred and eighty-two (282) candidates successfully passed their certification exams resulting in a 92.46% passage rate for the state (Table 49).

Table 49. Overall Performance on APRN Certification Exams by Graduates of Louisiana’s APRN Programs (2022-2025)

Report Year	No. Taking Exam	No. Passing Exam	Passage Rate %
2025	305	282	92.46%
2024	275	250	90.91%
2023	320	305	95.31%
2022	367	347	94.55%
1 & 4 Year Variance	↑11% / ↓17%	↑13% / ↓19%	↑2% / ↓2%

Graduate Nursing Programs in Louisiana Offering Non-Licensure Graduate Nursing Degrees

LSBN does not have jurisdiction over those graduate nursing programs that lead to non-licensure graduate degrees such as nursing education, nursing administration, executive nurse leader, and clinical nurse leader. To better inform policy makers about nursing workforce demands and predict future nursing workforce needs, it is important to be able to describe, to the best of our ability, the number of nurses that are pursuing graduate nursing education outside of advanced practice roles. In this section of the annual report, the Center for Nursing will present data on non-licensure graduate nursing programs in Louisiana (Table 50).

Table 50. Non-Licensure Graduate Nursing Programs in Louisiana (2025)

Master’s Program	Role/Focus	Degree/Certificate
Grambling State University	Nursing Education	MSN
Intercollegiate Consortium for a Master of Science in Nursing (ICMSN) <ul style="list-style-type: none"> • McNeese State University • Nicholls State University • Southeastern Louisiana University • University of Louisiana at Lafayette 	Nursing Education Nurse Executive	MSN MSN
Loyola University	Executive Leadership / Nurse Administration	Post-Masters DNP
LSU Health New Orleans	Nurse Educator Executive Nurse Leader Clinical Nurse Leader Public/Community Health Research Doctorate	MSN Post Masters DNP; BSN-DNP MSN Post Masters DNP; BSN-DNP PhD
Northwestern State University	Nursing Education Nursing Administration	MSN MSN

Master's Program	Role/Focus	Degree/Certificate
	Organizational Systems Leadership	Post Master's DNP
Southeastern Louisiana University	Population – Aggregate Executive Leadership	Post Master's DNP BSN-DNP
Southern University	Nursing Education Nursing Administration Nursing Leadership	MSN MSN PhD Post Master's DNP
University of Louisiana Lafayette	Aggregate Systems Focus	Post Master's DNP
University of Louisiana Monroe	Clinical Nurse Leader – Nurse Administrator	MSN

Admission to Non-Licensure Graduate Nursing Programs in Louisiana in 2025

In the 2025 report year, 66 RNs were admitted to Louisiana's non-licensure graduate nursing programs, which represents a 40% decrease in number when compared to 2024 (Table 51).

Forty-eight percent (32) of the RNs were admitted to nursing education programs which represents an 18% decrease in number when compared to the previous year. Eighteen percent (12) of the RNs were admitted to postmaster's DNP programs which represents a 74% decrease in number when compared to the previous year. There was also a 17% decrease in the number of RNs that were admitted to nursing administration/executive programs compared to a 167% increase in the previous report year. In contrast, there was a 100% increase in the number of RNs that were admitted to PhD in nursing programs that do not lead to licensure.

Table 51. Admissions to Non-Licensure Graduate Nursing Programs in Louisiana (2022-2025)

Report Year	No. of Students Admitted to Nursing Education Programs	No. of Students Admitted to Nursing Administration/ Executive Programs Traditional, Post-Masters DNP and BSN-DNP	No. of Students Admitted to Clinical Nurse Leader	No. of Students Admitted to Postmasters DNP Non-APRN Programs	No. of Students Admitted to PhD in Nursing Program	Total No. of Students Admitted to Non-Licensure Graduate Nursing Programs
2025	32 (48%)	20 (30%)	0 (0%)	12 (18%)	2	66
2024	39 (35%)	24 (22%)	0 (0%)	46 (42%)	1	110
2023	34 (50%)	9 (13%)	15 (22%)	9 (13%)	0	*68
2022	27 (27%)	20 (20%)	15 (15%)	35 (35%)	3	100
1 & 4 Year Variance	↓18% / ↑19%	↓17% / 0%	- / ↓100%	↓74% / ↓66%	↑100% / ↓33%	↓40% / ↓34%

*Note: 2023 – Students admitted to the Public Community Health Non-Licensure Graduate Program (1) were included in the final total.

Enrollment in Non-Licensure Graduate Nursing Programs in Louisiana

In the 2025 report year, a total of 159 RNs were enrolled in Louisiana’s non-licensure graduate nursing programs (Table 52). Forty percent (64) were enrolled in post-master’s DNP and BSN-DNP programs, 36% (57) were enrolled in nursing education programs, and 11% (18) were enrolled in nursing administration/executive programs and PhD in nursing programs.

Table 52. Enrollment in Non-Licensure Graduate Nursing Programs in Louisiana (2022-2025)

Report Year	No. of Students Enrolled in Nursing Education Programs	No. of Students Enrolled in Nursing Administration/ Executive Programs Traditional, Post-Masters DNP and BSN-DNP	No. of Students Enrolled in Clinical Nurse Leader Programs	No. of Students Enrolled in Postmasters DNP and BSN-DNP Non-APRN Programs	No. of Students Enrolled in PhD in Nursing Program	Total No. of Students Enrolled in Non-Licensure Graduate Nursing Programs
2025	57 (36%)	18 (11%)	1 (0.6%)	64 (40%)	18 (11%)	*159
2024	35 (24%)	37 (25%)	0 (0%)	56 (38%)	19 (13%)	*148
2023	63 (29%)	43 (20%)	21 (10%)	61 (29%)	25 (12%)	*214
2022	59 (26%)	48 (21%)	19 (8%)	73 (32%)	28 (12%)	*228
1 & 4 Year Variance	↑63% / ↓3%	↓51% / ↓63%	~ / ↓95%	↑14% / ↓12%	↓5% / ↓36%	↑7% / ↓30%

*Note: 2022- Students enrolled in the DNS Program (1) were included in the final total. 2023 – Students enrolled in the Public Community Health Non-Licensure Graduate Program (1) were included in the final total. 2024 – Students enrolled in the Public Community Health Non-Licensure Graduate Program (1) were included in the final total. 2025 – Students enrolled in the Public Community Health Non-Licensure Graduate Program (1) were included in the final total.

Gender of Students Enrolled in Non-Licensure Graduate Nursing Programs in Louisiana

As shown in Table 53, the vast majority of students enrolled in non-licensure graduate nursing programs in Louisiana were female (92%), an increase of two percentage point when compared to the previous report year. There was a 13% decrease in the number of male students enrolled.

Table 53. Gender of Students Enrolled in Non-Licensure Graduate Programs in Louisiana (2022-2025)

Report Year	Male		Female		Total Non-Licensure Students
	#	%	#	%	
2025	13	8%	146	92%	159
2024	15	10%	133	90%	148
2023	19	9%	195	91%	214
2022	24	11%	204	89%	228
1 & 4 Year Variance	↓13% / ↓46%		↑10% / ↓28%		↑7% / ↓30%

Ethnicity of Students Enrolled in Non-Licensure Graduate Nursing Programs in Louisiana

Fifty-one percent (81) of the students enrolled in non-licensure graduate programs were minorities (Table 54). There was a 40% decrease in the number of Hispanic/Latino students enrolled, and a 9% decrease in the number of Black/African American students enrolled.

Table 54. Ethnicity of Students Enrolled in Non-Licensure Graduate Nursing Programs in Louisiana (2022-2025)

Report Year	White		Black/African American		Hispanic/Latino		Asian		Other	
	#	%	#	%	#	%	#	%	#	%
2025	78	49%	61	38%	3	2%	2	1%	15	9%
2024	72	49%	67	45%	5	3%	0	0%	4	3%
2023	109	51%	77	36%	6	3%	4	2%	18	8%
2022	128	56%	79	35%	6	3%	6	3%	9	4%
1 & 4 Year Variance	↑8% / ↓39%		↓9% / ↓23%		↓40% / ↓50%		~ / ↓67%		↑275% / ↑67%	

Note: American Indian/Alaska Native (1), Native Hawaiian/Pacific Islander (0) included in *Other*, Total (2025) = 159.

Age of Students enrolled in Non-Licensure Graduate Nursing Programs in Louisiana

In 2025, approximately 64% of the students enrolled in Louisiana’s non-licensure graduate nursing programs were between 31-40 years of age (26%) and 41-50 years of age (38%). There was a 500% increase in the number of students enrolled in non-licensure graduate nursing programs that were between 21-25 years of age and a 29% increase in the number of students 26-30 years of age.

Table 55. Age of Students Enrolled in Non-Licensure Graduate Nursing Programs in LA (2022-2025)

Report Year	17-20		21-25		26-30		31-40		41-50		51-60		>61	
	#	%	#	%	#	%	#	%	#	%	#	%	#	%
2025	0	0%	6	4%	22	14%	41	26%	61	38%	23	14%	6	4%
2024	0	0%	1	1%	17	11%	44	30%	51	34%	28	19%	7	5%
2023	0	0%	9	4%	27	13%	64	30%	74	35%	27	13%	13	6%
2022	0	0%	12	5%	23	10%	88	39%	67	29%	29	13%	9	4%
1 & 4 Year Variance	0%		↑500% / ↓50%		↑29% / ↓4%		↓7% / ↓53%		↑20% / ↓9%		↓18% / ↓21%		↓14% / ↓33%	

Note: Total (2025) = 159

Graduates from Non-Licensure Graduate Nursing Programs in Louisiana

In the 2025 report year, 49% of the graduates from non-licensure graduate nursing programs were from post-master’s DNP programs compared to 45% in 2024 (Table 56). Twenty percent of the graduates from non-licensure graduate nursing programs were from Nursing Administration/Executive programs compared to 24% in 2024. The number of APRNs graduating from Nursing Education programs increased by 46% (19) compared to 13 in 2024.

Table 56. Graduates from Non-Licensure Graduate Nursing Programs in Louisiana According to Program Type (2022-2025)

Report Year	No. of Nursing Education Graduates		No. of Nursing Administration/ Executive Graduates		No. of Graduates from Clinical Nurse Leader Programs		No. of Graduates from Post-Masters DNP Non-APRN Programs		No. of Graduates from PhD in Nursing Programs		Total No. of Graduates from Non-Licensure Graduate Nursing Programs
	#	%	#	%	#	%	#	%	#	%	
2025	19	27%	14	20%	1	1%	35	49%	2	3%	71
2024	13	24%	13	24%	0	0%	24	45%	3	6%	53
2023	29	28%	30	29%	6	6%	37	36%	2	2%	104
2022	12	14%	22	26%	6	7%	40	48%	4	5%	84
1 & 4 Year Variance	↑46% / ↑58%		↑8% / ↓36%		~ / ↓83%		↑46% / ↓13%		↓33% / ↓50%		↑34% / ↓15%

Gender, Racial Distribution and Age of Graduates from Non-Licensure Graduate Nursing Programs in Louisiana

Females represented 90% of the graduates from Louisiana’s non-licensure graduate nursing programs in 2025, while males represented 10% compared to 4% in the previous report year (Table 57).

Table 57. Gender of Graduates from Non-Licensure Graduate Nursing Programs in Louisiana (2025)

Report Year	Male		Female		Total APRN Graduates
	#	%	#	%	
Education	1	5%	18	95%	19
Administration/Executive	2	14%	12	86%	14
Post Masters DNP Non-APRN	4	11%	31	89%	35
Total	7*	10%	64*	90%	71*

*Graduates from the PhD Program (2 Female, 0 Male) and the Clinical Nurse Leader Program (1 Female, 0 Male) were included in the final total.

In 2025, 55% (39) of the 71 graduates from non-licensure graduate nursing programs in Louisiana were minorities, which is an increase of four percentage points when compared to 2024 (Table 58).

Table 58. Racial Distribution of Graduates from Non-Licensure Graduate Nursing Programs in Louisiana (2025)

Report Year	White		Black/African American		Hispanic/Latino		Asian		Other	
	#	%	#	%	#	%	#	%	#	%
Education (19)	9	47%	9	47%	1	5%	0	0%	0	0%
Administration/ Executive (14)	6	43%	4	28%	2	14%	0	0%	2	14%
Post Masters DNP Non-APRN (35)	16	46%	19	54%	0	0%	0	0%	0	0%
Total (*71)	32*	45%	34*	48%	3	4%	0	0%	2	3%

*Graduates from the PhD Program (2 Black/African American) and the Clinical Nurse Leader Program (1 White) were included in the final total.

As depicted in Table 59, approximately 63% (45) of the graduates from non-licensure graduate nursing programs in Louisiana were between 31-40 years of age (29%) and 41-50 years of age (34%).

Table 59. Age of Graduates from Non-Licensure Graduate Nursing Programs in LA (2025)

Report Year	17-20		21-25		26-30		31-40		41-50		51-60		>61	
	#	%	#	%	#	%	#	%	#	%	#	%	#	%
Education Total (19)	0	0%	1	5%	5	26%	4	21%	5	26%	3	16%	1	5%
Administration Total (14)	0	0%	0	0%	2	14%	3	21%	3	21%	5	36%	1	7%
Post Masters DNP Non-APRN (35)	0	0%	0	0%	0	0%	11	31%	16	46%	6	17%	2	6%
Total (*71)	0	0%	1	1%	7	10%	21*	29%	24	34%	14	20%	4	6%

*Graduates from the PhD Program (2: 31-40) and the Clinical Nurse Leader Program (1: 31-40) were included in the final total.

Nurse Faculty Teaching in Graduate Nursing Programs in Louisiana

Educational Preparation of Nursing Faculty Teaching in Graduate Nursing Programs in Louisiana

According to the LSBN Rules and Regulations, faculty teaching in Graduate Nursing programs in Louisiana must have a minimum of a graduate degree in nursing (LSBN Rules and Regulations Title 46 Part XLVII Chapter 35, 3515 B. 4), although most accrediting bodies prefer that graduate nursing faculty have a doctorate either in nursing or in a related field. Eighty percent (253) of the faculty teaching in Louisiana’s graduate nursing programs held an earned doctorate in nursing or a related field during the 2025 report year (Table 60). Over the last four years there has been a 10% decrease in the number of doctoral prepared faculty teaching in Louisiana’s graduate nursing programs. Twenty percent of the faculty teaching in the graduate nursing programs in Louisiana held a masters’ degree. These individuals possessed credentials and/or expertise in an advanced practice specialty area that is recognized by both LSBN and national accrediting bodies.

Table 60. Educational Preparation of Faculty Teaching in Graduate Nursing Programs

Report Year	No. of Faculty with a Doctorate in Nursing	No. of Faculty with a Doctorate in a Related Field	No. of Mastered Prepared Nurses Teaching in Graduate Programs	Total Faculty
2025	224 (71%)	29 (9%)	63 (20%)	316
2024	217 (72%)	34 (11%)	49 (16%)	300
2023	242 (72%)	28 (8%)	67 (20%)	337
2022	232 (67%)	50 (14%)	60 (17%)	348
1 & 4 Year Variance	↑3% / ↓3%	↓15% / ↓42%	↑29% / ↑5%	↑5% / ↓9%

According to Table 61, there was a 2% decrease in the number of faculty holding a PhD in Nursing in 2025 with a 29% increase over the past four years. There was a 7% increase in the number of graduate nurse faculty with a DNS. The number of DNPs increased by 7, going from 161 in 2024 to 168 in 2025.

Table 61. Doctoral Prepared Graduate Nurse Faculty

	Doctorate of Nursing Science (DNS)	Doctorate of Nursing Practice (DNP)	Doctor of Philosophy in Nursing (PhD Nursing)	Doctorate in a Related Field	Total # of Doctoral Prepared Graduate Faculty
2025	16 (6%)	168 (66%)	40 (16%)	29 (11%)	253
2024	15 (6%)	161 (64%)	41 (16%)	34 (14%)	251
2023	18 (7%)	174 (64%)	50 (19%)	28 (10%)	270
2022	22 (8%)	179 (63%)	31 (11%)	50 (18%)	282
1 & 4 Year Variance	↑7% / ↓27%	↑4% / ↓6%	↓2% / ↑29%	↓15% / ↓42%	↑1% / ↓10%

Filled and Vacant Nurse Faculty Positions in Graduate Nursing Programs in Louisiana

A total of 316 nurse faculty taught at some point and time in the graduate nursing programs during the 2025 report year (Table 62). There were 185 filled full-time graduate nurse faculty positions reported statewide which reflects a 3% increase in number compared to the previous report year. There were 20 new faculty appointments (38 in 2024) which represents a 47% decrease in number. There were 22 vacant nurse faculty positions in 2025 compared to 9 positions in 2024.

Table 62. Faculty Positions in Graduate Nursing Programs in LA (2022-2025)

Report Year	No. of Budgeted Nurse Faculty Positions Filled	No. of Full-time and Part-time Faculty Teaching in Graduate Nursing Programs	Nurse Faculty Positions Funded from other Sources	Vacant Nurse Faculty Positions	No. of New Faculty Appointments
2025	185	316	83	22	20
2024	179	300	40	9	38
2023	172	337	45	11	37
2022	174	348	77	13	44
1 & 4 Year Variance	↑3% / ↑6%	↑5% / ↓9%	↑108% / ↑8%	↑144% / ↑69%	↓47% / ↓55%

Graduate Nursing Faculty Attrition

As seen in Table 63, a total of 20 graduate faculty left their teaching positions in graduate nursing programs in Louisiana in 2025 for one of the following reasons: resignations (12), retirements (7) and terminated (1). There were two faculty on leave during the 2025 report year compared to three faculty in 2024.

Table 63. Graduate Nursing Faculty Attrition: Leave, Resignation, and Retirement/Death/Termination

Report Year	No. of Faculty on Leave	No. of Faculty Resignations	No. of Faculty Retiring/Death/Termination-Contracts Ended
2025	2	12	7 Retirements / 0 Contract Ended / 1 Terminations / 0 Deceased
2024	3	10	4 Retirements / 1 Contract Ended / 2 Terminations / 0 Deceased
2023	2	7	11 Retirements / 1 Contract Ended / 1 Terminations / 0 Deceased
2022	2	12	10 Retirements / 7 Contracts Ended / 0 Terminations / 2 Deceased
1 & 4 Year Variance	↓33% / 0%	↑20% / 0%	↑75% / ↓30% Retirements ↓100% / ↓100% Contracts Ended ↓50% / ~ Terminations 0% / ↓100% Deceased

Gender, Ethnicity, and Age of Faculty Teaching in Graduate Nursing Programs in Louisiana

As noted in Table 64, there was a 10% decrease in the number of graduate nurse faculty that were males during the current report year, the majority of faculty teaching in graduate nursing programs in Louisiana are female (86%).

Table 64. Gender Distribution of Graduate Nursing Faculty (2022-2025)

Report Year	Male		Female		Total Number of Faculty
	#	%	#	%	
2025	43	14%	273	86%	316
2024	48	16%	252	84%	300
2023	46	14%	291	86%	337
2022	53	15%	295	85%	348
1 & 4 Year Variance	↓10% / ↓19%		↑8% / ↓7%		↑5% / ↓9%

Twenty-five percent (78) of the faculty teaching in graduate nursing programs in Louisiana were minorities in the 2025 report year (Table 65).

Table 65. Ethnicity of Graduate Nursing Faculty (2022-2025)

Ethnicity of Graduate Nursing Faculty	2022		2023		2024		2025		1 & 4 Year Variance
	#	%	#	%	#	%	#	%	
White	272	78%	259	77%	232	77%	238	75%	↑3% / ↓13%
Black/African American	67	19%	69	20%	63	21%	71	22%	↑13% / ↑6%
Hispanic/Latino	4	1%	4	1%	3	1%	2	0.6%	↓33% / ↓50%
Asian	2	0.6%	4	1%	2	1%	2	0.6%	0% / 0%
American Indian/ Alaska Native	0	0%	0	0%	0	0%	1	0.3%	~ / ~
Other	3	0.9%	1	0.3%	0	0%	2	0.6%	~ / ↓33%
Total	348		337		300		316		↑5% / ↓9%

Forty-five percent of the faculty teaching in graduate nursing programs in Louisiana were 51+ years of age in 2025 and 22% were 61+ years (Table 66).

Table 66. Age Distribution of Graduate Nursing Faculty (2022-2025)

Age Category	2022		2023		2024		2025		1 & 4 Year Variance
	#	%	#	%	#	%	#	%	
30 and younger	1	0.3%	1	0.3%	0	0%	1	0.3%	~ / 0%
31-40	66	19%	63	19%	50	17%	52	16%	↑4% / ↓21%
41-50	100	29%	100	30%	102	34%	119	38%	↑17% / ↑19%
51-55	44	13%	55	16%	47	16%	36	11%	↓23% / ↓18%
56-60	50	14%	40	12%	36	12%	39	12%	↑8% / ↓22%
61-65	39	11%	33	10%	22	7%	23	7%	↑4% / ↓41%
66-70	41	12%	32	9%	31	10%	32	10%	↑3% / ↓22%
>71	7	2%	13	4%	12	4%	14	4%	↑17% / ↑100%
Total	348		337		300		316		↑5% / ↓9%

THE 2025 NURSE SUPPLY REPORT

The 2025 Nurse Supply Report will be published as an addendum report at a later date. The 2026 licensure renewal data, which is an integral component of the 2025 Nurse Supply Report, was released in March 2026. Once quality control checks have been completed, an analysis of the data will be conducted, and an addendum report will be prepared by the Center for Nursing.

References

- 2024-2025 Enrollment and Graduations in Baccalaureate and Graduate Programs in Nursing. American Association of Colleges of Nursing
- 2024-2025 Salaries of Instructional and Administrative Nursing Faculty in Baccalaureate and Graduate Programs in Nursing. Washington, DC: American Association of Colleges of Nursing.
- Bureau of Labor Statistics, U.S. Department of Labor, *Occupational Outlook Handbook* Nurse Anesthetists, Nurse Midwives, and Nurse Practitioners. Retrieved from <https://www.bls.gov/ooh/healthcare/nurse-anesthetists-nurse-midwives-and-nurse-practitioners.htm>
- Fang, D. and Kesten, K. (2017). Retirements and succession of nursing faculty in 2016-2025. *Nursing Outlook*, 65 (5), 633-642.
- Joynt, J. & Kimball, B. (2008). *Blowing open the bottleneck: Designing new approaches to increase nurse education capacity* (A white paper commissioned by the Robert Wood Johnson Foundation, the Center to Champion Nursing in America, and the U.S. Department of Labor, Employment and Training Administration). Retrieved from <http://www.rwjf.org/files/research/3335.32415.pdf>
- Louisiana State Board of Nursing (2025). *Louisiana State Board of Nursing 2024 Annual Report*. Retrieved from <https://www.lsbn.state.la.us/wp-content/uploads/annual-reports/annualreport2024.pdf?v=1775756324>
- National Council State Boards of Nursing (2025). *Number of candidates taking NCLEX Examination and Percent Passing, by Type of Candidate*. Retrieved from <https://www.ncsbn.org/exams/exam-statistics-and-publications/nclex-pass-rates.page>
- Southern Regional Education Board (2021). Average salaries of full-time instructional faculty by rank at public four-year colleges and universities. Retrieved from <https://www.sreb.org/post/average-salaries-full-time-instructional-faculty-rank-public-four-year-colleges-and>
- Title 46 Professional and Occupational Standards Part XLVII. Nurses: Practical Nurses and Registered Nurses Subpart 2. Registered Nurses (2024). *Undergraduate and Graduate Nursing Education Degree Programs: Chapter 35, No. 3515, B.4*. Retrieved from <https://www.lsbn.state.la.us/laws-and-rules/>
- Title 46 Professional and Occupational Standards Part XLVII. Nurses: Practical Nurses and Registered Nurses Subpart 2. Registered Nurses (2024). *Undergraduate and Graduate Nursing Education Degree Programs: Chapter 35, No. 3515, B.9*. <https://www.lsbn.state.la.us/laws-and-rules/>
- Title 46 Professional and Occupational Standards Part XLVII. Nurses: Practical Nurses and Registered Nurses Subpart 2. Registered Nurses (2024).

*Undergraduate and Graduate Nursing Education Degree Programs:
Chapter 35, No. 3541 B <https://www.lsbn.state.la.us/laws-and-rules/>*

Title 46 Professional and Occupational Standards Part XLVII. Nurses: Practical Nurses and Registered Nurses Subpart 2. Registered Nurses (2024).

*Undergraduate and Graduate Nursing Education Degree Programs:
Chapter 35, No. 3543 A <https://www.lsbn.state.la.us/laws-and-rules/>*

Title 46 Professional and Occupational Standards Part XLVII. Nurses: Practical Nurses and Registered Nurses Subpart 2. Registered Nurses (2024).

*Undergraduate and Graduate Nursing Education Degree Programs:
Chapter 35, No. 3543 E.1.a <https://www.lsbn.state.la.us/laws-and-rules/>*

Title 46 Professional and Occupational Standards Part XLVII. Nurses: Practical Nurses and Registered Nurses Subpart 2. Registered Nurses (2024). *Undergraduate and Graduate Nursing Education Degree Programs: Chapter 35, No. 3543 G.2.c*

<https://www.lsbn.state.la.us/laws-and-rules/>

APPENDIX A

LSBN Approved Nursing Education Programs

Louisiana State Board of Nursing

17373 Perkins Road
Baton Rouge, LA 70810
Telephone: (225) 755-7500 Fax: (225) 755-7580
www.lsbn.state.la.us

LSBN APPROVED NURSING EDUCATION PROGRAMS

DIPLOMA PROGRAM

BATON ROUGE GENERAL MEDICAL CENTER

School of Nursing
3616 North Boulevard
Baton Rouge, LA 70806
Phone: (225) 387-7623; Fax: (225) 381-6168
Director: Linda M. Markey, PhD, MSN, RN
Approval Status: Full

ASSOCIATE DEGREE PROGRAMS

BATON ROUGE COMMUNITY COLLEGE

Division of Nursing & Allied Health
201 Community College Drive
Baton Rouge, LA 70806
Phone: (225) 216-8047; Fax: (225) 216-8100
ASN Program Manager:
Shantrelle Batiste, MSN, RN, CPN
Approval Status: Full

LOUISIANA DELTA COMMUNITY COLLEGE

Nursing & Allied Health
7500 Millhaven Road
Monroe, LA 71203
Phone: (318) 345-9174; Fax: (318) 345-9573
Program Director: Courtney Gordon, MSN, RN
Approval Status: Full

BOSSIER PARISH COMMUNITY COLLEGE

Division of Science and Allied Health
Nursing Program
6220 East Texas Street
Bossier City, LA 71111
Phone: (318) 678-6267; Fax: (318) 678-6199
Program Director:
Angela Preimesberger, MSN, APRN, FNP-C
Approval Status: Full

LSU at ALEXANDRIA

School of Nursing
8100 Highway 71 South
Alexandria, LA 71302
Phone: (318) 473-6459; Fax: (318) 473-6567
Director:
Sarita James, PhD, RN-BC, CNE
Approval Status: Full

DELGADO COMMUNITY COLLEGE

Charity School of Nursing
615 City Park Avenue, New Orleans, LA. 70119
Bldg. 14 – Ochsner Center for Nursing and Allied Health
Phone: (504) 568-6411; Fax: (504) 568-5494
Dean: Jennifer Fernandez, MSN, RN, CPN
Approval Status: Full

LSU at EUNICE

Division of Nursing & Allied Health
P.O. Box 1129
Eunice, LA 70535
Phone: (337) 550-1357; Fax: (337) 550-1289
Director of Nursing:
Karen Walton, DNP, RN, CHSE, NPD-BC, CNE
Approval Status: Full

FLETCHER TECHNICAL COMMUNITY COLLEGE

Nursing and Allied Health
1407 Highway 311
Schriever, LA 70395
Phone: (985) 857-3655; Fax: (985) 857-3689
Dean of Nursing and Allied Health:
Danielle Vauclin, DNP, RN
Approval Status: Full

LOUISIANA TECH UNIVERSITY

Division of Nursing

P. O. Box 3152

Ruston, LA 71272

Phone: (318) 257-3101 or (318) 257-3103

Fax: (318) 257-4569

Director: Sarah McVay, DNP, MSN, RN, CNE, CPN

Associate Dean for Undergraduate Studies: Donna Hood, PhD, RN

Approval Status: Full

NORTHSHORE TECHNICAL COMMUNITY COLLEGE

Health Sciences and Nursing

65556 Centerpoint Blvd.

Lacombe, LA 70446

Phone: (985) 545-1500

ASN Director: James Foley, DNP, RN

Approval Status: Full

NORTHWESTERN STATE UNIVERSITY OF LOUISIANA

College of Nursing and School of Allied Health

Nursing Education Center

1800 Line Avenue

Shreveport, LA 71101-4612

Phone: (318) 677-3100; Fax: (318) 677-3127

Interim Dean: Dr. Aimee L. Badeaux, PhD, CRNA, APRN, CNE

Senior Director: Anna Morris, DNP, RN, CNE

Director, ASN/BSN Programs:

Pamela Holcombe, MSN, RN, CNE

Approval Status: Full

SOUTHERN UNIVERSITY at SHREVEPORT

School of Nursing

Metro Center-610 Texas St., Ste. 500D

Shreveport, LA 71101

Phone: (318) 670-9641; Fax: (318) 670-6639

Director: Tiffany Williams Varner, MSN, RN

Approval Status: Full

SOUTH LOUISIANA COMMUNITY COLLEGE

School of Nursing

1101 Bertrand Drive

Lafayette, LA 70506

Phone: (337) 521-9000; Fax: (318) 521-8992

Associate Dean of Nursing/Chief Nursing Officer:

Courtney Metz, MSN, RN

Approval Status: Full

SOWELA TECHNICAL COMMUNITY COLLEGE

Department of Nursing

3820 Senator J. Bennet Johnston Avenue

Lake Charles, LA 70615

Phone: (337) 421-6594; Fax: (337) 491-2103

Dean: Kristine Stout, MSN, RN

Approval Status: Full

BACCALAUREATE PROGRAMS

CHAMBERLAIN UNIVERSITY

College of Nursing
400 LaBarre Road
Jefferson, LA 70121
Phone: (504) 312-2708
Chief Nursing Administrator:
Carrie Hancock, PhD, RN, NPD-BC
Approval Status: Full

DILLARD UNIVERSITY

College of Nursing
2601 Gentilly Blvd. PSB 102
New Orleans, LA 70122-3097
Phone: (504) 816-4717; Fax: (504) 816-4861
Interim Dean: Brandy Johnson, DNP, MSN, RN
Approval Status: Probation

FRANCISCAN MISSIONARIES OF OUR LADY UNIVERSITY

School of Nursing
7500 Hennessy Boulevard
Baton Rouge, LA 70809
Phone: (225) 768-1750; Fax: (225) 768-1760
Dean: Amy Hall, PhD, RN, CNE
Associate Dean: Bronwyn Doyle
Approval Status: Full

GRAMBLING STATE UNIVERSITY

School of Nursing
Box 4272
Grambling, LA 71245
Phone: (318) 274-2672; Fax: (318) 274-3491
Associate Dean:
Mary Meg Brown, PhD, RN, ACNS-BC
Approval Status: Full

HERZING UNIVERSITY

Department of Nursing
3900 Causeway Blvd., Suite 800
Metairie, LA 70002
Phone: (504) 733-0074; Fax: (504) 733-0020
Program Chair:
Cory Lacrouts, DNP, RN
Approval Status: Full

LOUISIANA CHRISTIAN UNIVERSITY

Division of Nursing
1140 College Drive - Box 556
Pineville, LA 71359-0556
Phone: (318) 487-7127; Fax: (318) 487-7488
Dean: Amelia D. Davis, PhD, RN
Approval Status: Initial

LSU HEALTH NEW ORLEANS

School of Nursing
1900 Gravier St.
New Orleans, LA 70112
Phone: (504) 568-4180; Fax: (504) 568-5154
Dean: Demetrius Porche, DNS, PhD, PCC, ANEF, FACHE, FAANP, FAAN
Assistant Dean for Student Services:
Dr. Melissa F. Nunn
Interim Director of Traditional Bachelor of Science in Nursing: Dr. Nichole Thomas
Approval Status: Full

LOYOLA UNIVERSITY

School of Nursing
6363 St. Charles Avenue, Campus Box 45
New Orleans, LA 70118
Phone: (504) 865-3142
Dean: Michelle Collins, PhD, CNM, RNC-EFM, FACNM, FAAN, FNAP
Program Director: Colette D. Baudoin, PhD, MSN, RN, OCN, CNE
Approval Status: Initial

MCNEESE STATE UNIVERSITY

College of Nursing
P.O. Box 90415
Lake Charles, LA 70609
Phone: (337) 475-5820; Fax: (337) 475-5924
Dean: Ann Warner, PhD, RN, CNE
Department Head for Undergraduate Nursing Programs:
Amelia Washington, DNP, RN
Approval Status: Full

NICHOLLS STATE UNIVERSITY

College of Nursing
University Station - Box 2143
Thibodaux, LA 70310
Phone: (985) 448-4696; Fax: (985) 448-4932
Dean: Raquel Engolio, Ed.D., MSN, RN, CPN
Associate Dean: Rebecca Lyons, MSN, RN CCRN
Department Head: Alaina Daigle, PhD, RN
Approval Status: Full

NORTHWESTERN STATE UNIVERSITY OF LOUISIANA

College of Nursing and School of Allied Health
Nursing Education Center
1800 Line Avenue
Shreveport, LA 71101-4612

Phone: (318) 677-3100; Fax: (318) 677-3127

Dean: Aimee Badeaux, PhD, CRNA, APRN, CNE
Senior Director: Anna Morris, DNP, RN, CNE
Director, ASN/BSN Programs: Pamela Holcombe, MSN, RN, CNE

Approval Status: Full

SOUTHEASTERN LOUISIANA UNIVERSITY

School of Nursing

SLU 10781

Hammond, LA 70402

Phone: (985) 549-2156; Fax: (985) 549-5087 or 5179

Dean: Ann Carruth, DNS, RN

Interim Dept. Head: Lindsay Domiano, PhD, RN

Approval Status: Full

SOUTHERN UNIVERSITY AT BATON ROUGE

School of Nursing

P.O. Box 11794

Baton Rouge, LA 70813

Phone: (225) 771-2166; Fax: (225) 771-2641

Dean: Sandra Brown, DNS, APRN, FNP-BC, CNE, ANEF, FAANP, FAAN

Approval Status: Full

SOUTHERN UNIVERSITY AT NEW ORLEANS

School of Nursing

6400 Press Drive

New Orleans, LA 70126

Phone: (504) 286-5000

Interim Dean: Dr. Bree Cook

Approval Status: Initial

TULANE UNIVERSITY

Program of Nursing

131 S Robertson Street, Ste. 1534

New Orleans, LA 70112

Phone: (504) 988-5566

Dean: Brenda Douglas, PhD, RN, CNE

Approval Status: Initial

UNIVERSITY OF HOLY CROSS

Department of Nursing and Allied Health

4123 Woodland Drive

New Orleans, LA 70131

Phone: (504) 398-2213; Fax: (504) 391-2421

Chair: Kristy Solis, RN, MSN, Ed.D

Approval Status: Full

UNIVERSITY OF LOUISIANA LAFAYETTE

College of Nursing and Health Sciences

P.O. Box 43810

Lafayette, LA 70504

Phone: (337) 482-6808; Fax: (337) 482-5649

Interim Dean:

Lisa Broussard, DNS, RN, CNE

Approval Status: Full

UNIVERSITY OF LOUISIANA MONROE

School of Nursing

700 University Avenue

Monroe, LA 71209-0460

Phone: (318) 342-1640; Fax: (318) 342-1567

Director: Sandy Kay Roncal, DNP, RN, CNL

Associate Director: Lee Ann Box, MSN, RN

Approval Status: Full

WILLIAM CAREY UNIVERSITY

School of Nursing

5615 Corporate Blvd, Suite 300

Baton Rouge, LA 70808

Phone: (225) 953-7017

Dean: Kelly Williamson, PhD, RN

Chief Nurse Administrator:

Hope Webb, PhD, RN, CNE, CNEcl

Undergraduate Academic Director/Program

Coordinator:

James Foley, MSN-HCSM, RN

Approval Status: Full

LSBN APPROVED GRADUATE PROGRAMS IN NURSING

DILLARD UNIVERSITY

College of Nursing
2601 Gentilly Blvd. PSB 102
New Orleans, LA 70122-3097
Phone: (504) 816-4717; Fax: (504) 816-4861
Interim Dean: Brandy Johnson, DNP, MSN, RN

Approval Status: Full

Degrees: MSN

Programs: Nursing Education
Nursing Administration

GRAMBLING STATE UNIVERSITY

School of Nursing
P.O. Box 4272
Grambling, LA 71245
Phone: (318) 274-2897
Associate Dean:

Mary Meg Brown, PhD, RN, ACNS-BC
MSN Program Director:
Tammy Stewart-Dixon

Approval Status: Full

Degrees: MSN

Programs: FNP (MSN, PMC)
PNP (MSN)
Nurse Educator (MSN)

INTERCOLLEGIATE CONSORTIUM FOR A MASTER OF SCIENCE IN NURSING (ICMSN):

Nicholls State University
McNeese State University
Southeastern Louisiana University
University of Louisiana Lafayette

Approval Status: Full

Degrees: MSN, BSN-DNP, PMC, Post-Master
DNP, Certificate (non-licensure)

Programs: FNP (MSN, PMC, PMDNP)
FPMHNP (MSN, PMDNP)
AHNP (MSN)
AHCNS (MSN)
APMHNP (MSN, BSN-DNP)
Nurse Educator (MSN)
Nurse Executive (MSN)
Cardiovascular Nursing (Grad Cert (non-licensure))

1. **NICHOLLS STATE UNIVERSITY**

College of Nursing
University Station - Box 2143
Thibodaux, LA 70310
Phone: (985) 448-4696
Fax: (985) 448-4932
Dean: Raquel Engolio, Ed.D., MSN, RN,
CPN
Associate Dean: Rebecca Lyons, MSN, RN
CCRN
Department Head: Alaina Daigle, PhD, RN

2. **MCNEESE STATE UNIVERSITY**

College of Nursing
P.O. Box 90415
Lake Charles, LA 70601 Phone:
(337) 475-5753
Dean: Ann Warner, PhD, RN, CNE *Graduate
Nursing Program Faculty:* Sattaria Dilks, DNP,
APRN, PMHNP-BC

3. **SOUTHEASTERN LOUISIANA UNIVERSITY**

School of Nursing
SLU 10781
Hammond, LA 70402
Phone: (985) 549-5045
Fax: (985) 549-5087
Dean: Ann Carruth, DNS, RN
Graduate Program Coordinator:
Laurie Kinchen, DNP, APRN, CPNP

4. **UNIVERSITY OF LOUISIANA LAFAYETTE**

College of Nursing and Health Sciences
P.O. Box 43810
Lafayette, LA 70454
Phone: (337) 482-6808
Interim Dean:
Lisa Broussard, DNS, RN, CNE
Graduate Program Coordinator:
Donna Gauthier, PhD, RN

LOYOLA UNIVERSITY

School of Nursing
6363 St. Charles Avenue, Campus Box 45
New Orleans, LA 70118
Phone: (504) 865-3142
Dean: Michelle Collins, PhD, CNM, RNC-EFM,
FACNM, FAAN, FNAP
Approval Status: Full
Degrees: MSN, PMC, DNP
Programs: FNP (MSN, PMC, PMC-PMDNP,
BSN-DNP)
ANP (MSN, PMC)
Certified Midwife (MSN, PMC)
NA (BSN-DNP)
AGACNP (BSN-DNP, PMC)
PMHNP (MSN, PMC)

LSU HEALTH NEW ORLEANS

School of Nursing
 1900 Gravier Street
 New Orleans, LA 70112
 Phone: (504) 568-4106

Dean: Demetrius Porche, DNS, PhD,
 PCC, ANEF, FACHE, FAANP, FAAN

Approval Status: Full

Degrees: BSN – DNP, PM-DNP

Programs: AGCNS (BSN-DNP)

FNP (Primary Care) (BSN-DNP, PM-DNP)
 NNP (BSN - DNP)
 CRNA (MSN, PMDNP, BSN-DNP)
 AGPCNP (BSN-DNP, PM-DNP)
 AGACNP (BSN-DNP, PM-DNP)
 Nurse Midwifery (DNP, Post Master's
 DNP)
 Public/Comm. Health Nurse (BSN-DNP)
 PMHNP (DNP, PM-DNP)
 PNP – AC (BSN-DNP, PM-DNP)
 PNP – PC (BSN-DNP, PM-DNP)
 Nurse Educator (MSN) (BSN-DNP)
 Executive Nurse Leader (BSN-DNP)
 Clinical Nurse Leader (MSN)
 AGACNP/AGCNS (Dual) (BSN-DNP)
 AGACNP/FNP Primary Care (Dual)
 (BSN-DNP)
 FNP Primary Care/PMHNP (Dual)
 (BSN-DNP)
 PNP-AC/AGACNP (Dual) (BSN-DNP)
 PNP-PC/PNP-AC (Dual) (BSN-DNP)

MCNEESE STATE UNIVERSITY

College of Nursing
 P.O. Box 90415
 Lake Charles, LA 70609
 Phone: (337) 475-5820; Fax: (337) 475-5924
Interim Dean: Ann Warner, PhD, RN, CNE

Approval Status: Full

Degrees: DNP

Programs: Psychiatric Mental Health Nurse
 Practitioner (PMHNP)

NORTHWESTERN STATE UNIVERSITY OF LOUISIANA

College of Nursing and School of Allied Health Nursing
 Education Center
 1800 Line Avenue
 Shreveport, LA 71101
 Phone: (318) 677-3100

Dean: Dr. Aimee L. Badeaux, PhD, CRNA, APRN, CNE
Senior Director: Anna Morris, DNP, RN, CNE *Director,*
MSN/PMC Programs: Angela Hardy, DNP, APRN, FNP-
 BC

Director, DNP Program: Aimee Badeaux, PhD, CRNA,
 ARPN

Approval Status: Full

Degrees: MSN, DNP, PMC

Programs: FNP (MSN, PMC)

PNP (MSN)
 WHNP (MSN)
 Adult Gerontology NP – Acute Care
 (MSN,PMC)
 Adult Gerontology NP – Primary Care (MSN)
 Nurse Anesthetist (BSN-DNP)
 Nurse Educator (MSN)
 Nurse Administrator (MSN)
 PMHNP (MSN, PMC)
 Advanced Practice Nursing (APRN (Post-
 Masters) to DNP)
 Organizational Systems Leadership (MSN (non-
 APRN) to DNP)

FRANCISCAN MISSIONARIES OF OUR LADY UNIVERSITY

School of Nursing
 7500 Hennessy Boulevard
 Baton Rouge, LA 70809
 Phone: (225) 214-6979
Dean: Amy Hall, PhD, RN, CNE

Approval Status: Full

Degree: MSN, DNP, PMC

Programs: CRNA (DNP)

Nurse Educator (MSN)
 Nurse Administrator (MSN)
 Family Nurse Practitioner (MSN, PMC)

SOUTHERN UNIVERSITY AT BATON ROUGE

School of Nursing
 P.O. Box 11794
 Baton Rouge, LA 70813
 Phone: (225) 771-2663
Dean: Sandra C. Brown, DNS, APRN, FNP-BC,
 CNE, ANEF, FAANP, FAAN
Interim Chair, Graduate Nursing Program:
 Annisa Stover, DNP, APRN, FNP-BC

Approval Status: Full

Degrees: MSN, PM Post Master's DNP

Programs: FNP (MSN, PMC, PMDNP)

Gerontology NP (MSN)
 Gerontology CNS (MSN)
 Nurse Educator (MSN)
 Nurse Administrator (MSN)

SOUTHEASTERN LOUISIANA UNIVERSITY

School of Nursing

SLU 10781

Hammond, LA 70402

Phone: (985) 549-5045

Fax: (985) 549-5087

Dean: Ann Carruth, DNS, RN

Graduate Program Coordinator: Laurie Kinchen,
DNP, APRN, CPNP

**OUT OF STATE SCHOOLS APPROVED TO OFFER CLINICAL
EXPERIENCE IN LOUISIANA**

UNDERGRADUATE PROGRAMS

EMORY UNIVERSITY

Nell Hodgson Woodruff School of Nursing
1520 Clifton Road NE
Atlanta, Georgia 30322
Phone: (404) 727-7980

Program Director of Distance Accelerated Baccalaureate Nursing Program: Angela Haynes-Ferere, DNP, FNP-BC, MPH

Dates of Approval:

Initial: October 10, 2024 – October 9, 2027

HERZING UNIVERSITY

5218 East Terrace Drive
Madison, WI 53718
Phone: (608) 249-6611

Associate Dean of Nursing Operations: Dina Hewett, Ph.D., RN, J.M., NEA-BC

Dates of Approval:

Initial: December 13, 2023 – December 13, 2026

SOUTHWEST MISSISSIPPI COMMUNITY COLLEGE

ADN Program
1156 College Drive
Summit, MS 39666
Phone: (601) 276-2000, Fax: (601) 276-3824

Associate Vice President for Nursing: Stephanie Greer, MSN, RN

Dates of Approval:

Initial: February 16, 2017 – February 16, 2020

Reapproved: through February 16, 2029

WESTERN GOVERNORS UNIVERSITY

4001 South 700 East, Suite 700
Salt Lake City, UT 84107
Phone: 801-274-3280

Director of Nursing: LaDana Badger, PhD, RN, CNE, CCE

Dates of Approval:

Initial: April 24, 2025 – April 23, 2028

GRADUATE PROGRAMS

BRADLEY UNIVERSITY

Department of Nursing
1501 West Bradley Avenue
Peoria, Illinois 61625-0684
Phone: (309) 677-4398; Fax: (309) 677-3184
Chairperson, Department of Nursing:
Rachel Borton, Ph.D., MSN, FNP-FPA, NRCME

Date of Approval:

Initial: August 10, 2017 – August 10, 2020

Reapproved: through August 20, 2026

Degrees: MSN, PMC, DNP

Programs: FNP (MSN, PMC)

AGACNP, AGPCNP, PMHNP
(DNP, MSN, PMC)

CHAMBERLAIN UNIVERSITY

College of Nursing
400 LaBarre Road
Jefferson, LA 70121
Phone: (504) 312-2708
Chief Nursing Administrator: Carrie Hancock,
PhD, RN, NPD-BC

Date of Approval:

Initial: August 8, 2024 – August 7, 2027

Degrees: MSN, PGC

Programs: MSN-FNP

MSN-AGPCNP
MSN-AGACNP
MSN-PMHNP
GC-FNP
GC-AGPCNP
GC-AGACNP
GC-PMHNP

FRONTIER NURSING UNIVERSITY

2050 Lexington Road
Versailles, KY 40383
FNU phone# (859) 251-4563
fax 859-251-4648
www.Frontier.edu

Dean of Nursing:

Joan Slager, CNM, DNP, FACNM, FAAN
joan.slager@frontier.edu

Dates of Approval:

Initial: December 14, 2012 – December 14, 2015

Reapproved: through February 22, 2027

Degrees: DNP, MSN, PGC

Programs: Certified Nurse Midwife

Family Nurse Practitioner
Psychiatric Mental Health Care Nurse
Practitioner
Women's Health Care Nurse Practitioner

GEORGETOWN UNIVERSITY

Berkley School of Nursing
3700 Reservoir Road, NW
St. Mary's Hall 101
Washington, DC 20057-1107
Phone: (202) 687-3118; Fax: (202) 687-4572
Interim Dean, School of Nursing & Health Studies:
John T. Monahan, J.D.

Dir. of Operations, Online Program: Stasia Levin,
Asst. Dir. of Operations, Online Program:

Lauren Hlava

Dates of Approval:

Initial: December 14, 2011 - December 14, 2013

Reapproved: through December 14, 2026

Degrees: MSN, PGC, BSN-DNP

Programs: FNP (MSN, PGC, BSN-DNP)

CNM/WHNP (Dual) (MSN, BSN-DNP)
AGACNP (MSN, PGC, BSN-DNP)
WHNP (MSN, PGC, BSN-DNP)
CNM (PGC)

GEORGE MASON UNIVERSITY

School of Nursing
4400 University Drive, MS 3C4
Fairfax, Virginia 22030
Phone: (703) 993-1961; Fax: (703) 993-1949
Interim Director: Cheryl Oetjen, DNP, APRN, FNP-BC

Dates of Approval:

Initial: December 2, 2021 - December 2, 2024

Reapproved: through December 4, 2027

Degrees: MSN

Programs: FNP (MSN)

GRACELAND UNIVERSITY

School of Nursing 1401
W. Truman Road
Independence, MO 64050-3434
Phone: (816) 833-0524; Fax: (816) 8332990
Dean of Graduate Programs: Jolene Lynn, PhD, MSN, RN

Dates of Approval:

Initial: October 10, 2024 – October 9, 2027

Degrees: MSN, PGCT, DNP

Programs: FNP (MSN, PGCT), AGACNP (MSN, PGCT),
PMHNP (MSN, PGCT)

HERZING UNIVERSITY

275 W. Wisconsin Avenue, Suite 210
Milwaukee, WI 53203
Phone: (866) 508-0748; Fax: (414) 727-7090
Associate Dean of Online Nursing: Dr. Tricia Wagner

Dates of Approval:

Initial: April 17, 2013 - April 17, 2015

Reapproved: through August 10, 2026

Degrees: MSN, PMC, RN-MSN, DNP

Program: BSN to DNP Option

FNP (MSN, PMC, RN-MSN, DNP)

PMHNP (MSN, PMC, RN-MSN, DNP)

AGACNP (MSN, PMC, RN-MSN, DNP)

AGPCNP (MSN, PMC, RN-MSN, DNP)

Direct Entry (MSN)

Nursing Leadership and Admin (DNP)

PNP (MSN-Post Baccalaureate Option, Accelerated Option; PMC, DNP)

Public Health Nursing (DNP)

Women's Health NP (MSN-Post

Baccalaureate Option, Accelerated Option; PMC, DNP)

LIBERTY UNIVERSITY

1971 University Blvd., Lynchburg, VA 24515
Phone: (434) 582-2519

Interim Dean: Dr. Tracey Turner

Dates of Approval:

Initial: August 11, 2022 – August 11, 2025

Reapproved: through June 25, 2028

Degrees: DNP, PMC

Program: FNP (BSN-DNP)

PMHNP (BSN-DNP)

PMHNP (MSN-DNP)

PMHNP (PMC)

Nurse Leadership (MSN-DNP)

MARYVILLE UNIVERSITY

College of Health Professions 650
Maryville University Drive
St. Louis, MO 63141
Phone: (314) 529-9453

Assistant Dean for Nursing:

Mykale Elbe, DNP, APRN, FNP-BC

Dates of Approval:

Initial: December 11, 2013 – December 11, 2015

Reapproved: through October 9, 2027

Degrees: MSN, BSN-DNP and PMC

Program: FNP (MSN, BSN-DNP and PMC)

SIMMONS COLLEGE

College of Natural, Behavioral, and Health Sciences
300 The Fenway
Boston, Massachusetts 02115-5898
Phone: (617) 521-2000

Associate Dean: Heather Shlosser, DNP, FNP-BC, PMHNP-BC

Dates of Approval:

Initial: June 11, 2015 – June 11, 2017

Reapproved: through August 20, 2026

Degrees: MSN, BSN to DNP, DNP, PGC

Program: FNP (RN-MSN, BSN-MSN,

BSN-DNP, DNP, PGC)

PMHNP (MSN, BSN-DNP,

DNP, PGC)

Leadership (MSN)

Executive Leadership (BSN-DNP)

SOUTH COLLEGE

DNP Nurse Anesthesia Program

400 Goodys Lane

Knoxville, TN

Phone: (865) 288 – 8424

Director: Lisa Osborne, DNP, CRNA, CHSE, FAANA

Dates of Approval:

Initial: December 12, 2022 – December 12, 2025

Reapproved: through October 23, 2028

Degrees: DNP

Program: DNP-NA

SOUTH COLLEGE

3000 Westinghouse Dr. Suite 200

Cranberry Twp, PA, 16066

Phone: (724) 720 – 9553

Associate Dean of Nursing: Kaitlin Cobourne PhD, RN, CNE, CNEci

Dates of Approval:

Initial: December 5, 2024 – December 4, 2027

Degrees: MSN, DNP

Programs: FNP, AGANP, PMHNP

TEXAS CHRISTIAN UNIVERSITY

School of Nurse Anesthesia
TCU Box 298626
Fort Worth, Texas 76129
Phone: (817) 257-7887; Fax: (817) 257-5472
Director: Robyn C. Ward, PhD, CRNA

Dates of Approval:

Initial: December 14, 2011 - December 14, 2013

Reapproved: through December 14, 2026

Degrees: DNP

Programs: CRNA (DNP)

TEXAS WESLEYAN UNIVERSITY

1201 Wesleyan Street
Fort Worth, Texas 76105-1536
Phone: (817) 531-4444; Fax: (817) 531-6508
Director, Graduate Programs of Nurse Anesthesia:
Terri Kane, DNAP, CRNA

Dates of Approval:

Initial: December 14, 2011 - December 14, 2013

Reapproved: through December 14, 2026

Degrees: DNAP, MSNA, MSN, PMC

Program: CRNA (DNAP: MSNA); FNP (MSN, PMC)

TROY UNIVERSITY

School of Nursing
400 Pell Avenue
Troy, Alabama 36802
Phone: (334) 808-6531
Director, School of Nursing:
Jeffery Wade Forehand, PhD, DNP, RN-BC, CNE

Dates of Approval:

Initial: October 10, 2012-October 10, 2014

Reapproved: through April 13, 2026

Degrees: MSN, DNP, PGC

Programs: FNP (MSN, DNP, PGC)

UNITED STATES UNIVERSITY

College of Nursing & Health Sciences
859 Mt. Vernon Hwy. NE, Suite 102
Sandy Springs, GA 30328
Phone: (619) 876-4250
Dean: Dr. Amanda Jones

Date of Approval:

Initial: June 18, 2020 – June 18, 2023

Reapproved: through August 10, 2026

Degrees: MSN, PMC

Programs: FNP

UNIVERSITY OF ALABAMA BIRMINGHAM

School of Nursing
1701 University Boulevard
Birmingham, AL 35294-1210
Phone: (205) 996-7608
Associate Dean for Graduate Clinical Education:
Dr. Aimee Chism Holland

Dates of Approval:

Initial: December 14, 2011 - December 14, 2013

Reapproved: through February 21, 2027

Degrees: MSN, DNP, PGC

Programs: FNP (MSN, PGC, DNP)

PMHNP (MSN, PGC, DNP) AGNP-PC
(MSN, PGC, DNP) AGNP-AC (MSN,
PGC, DNP) NNP (MSN, PGC, DNP)
PNP-PC (MSN, PGC, DNP) PNP-
AC(MSN, PGC, DNP) WHNP (MSN,
PGC, DNP)

UNIVERSITY OF MOBILE

School of Nursing 5735 College
Parkway
Mobile, AL 36613-2842
Phone: (740) 398-1198
Dean: Dr. Jessica Garner, DNP, FNP-C, CNE

Dates of Approval:

Initial: August 8, 2024 – August 7, 2027

Degrees: MSN, DNP, PGC

Programs: MSN-FNP
DNP-FNP PGC-FNP

UNIVERSITY OF SOUTH ALABAMA

College of Nursing
 5721 USA Drive North
 HAHN 3061
 Mobile, AL 36688-0002
 Phone: (251) 445-9400; Fax: (251) 445-9416
 Dean: Heather Hall, PhD, RN

Dates of Approval:

Initial: September 14, 2011 - September 14, 2013

Reapproved: through October 15, 2026

Degrees: RN-MSN, MSN, PMC, BSN-DNP, PM-DNP, DNP

Programs: **FNP/AGNP** - Acute Care

(Dual) (MSN, BSN-DNP, PM-DNP, PMC, DNP, RN-MSN)

AGNP - AC

(MSN, BSN-DNP, PM-DNP, PMC, DNP)

AGNP - PC

(MSN, BSN-DNP, PM-DNP, PMC, DNP)

FNP

(MSN, BSN-DNP, PM-DNP, PMC, DNP)

FMHNP

(MSN, BSN-DNP, PM-DNP, PMC, DNP)

NNP

(MSN, BSN-DNP, PM-DNP, PMC, DNP)

PNP - AC

(MSN, BSN-DNP, PM-DNP, PMC, DNP)

PNP - PC

(MSN, BSN-DNP, PM-DNP, PMC, DNP)

WHNP

(MSN, BSN-DNP, PM-DNP, PMC, DNP)

AGNS (PMC)

AGCNS (DNP)

AHCNS (MSN)

VANDERBILT UNIVERSITY

School of Nursing
 213 Godchaux Hall
 461 21st Avenue South
 Nashville, TN 37240-1119
 Phone: (615) 322-3804
 Fax: (615) 322-1708

Senior Associate Dean for Academics: Dr. Mavis N Schorn

Dates of Approval:

Initial: December 14, 2011 - December 14, 2013

Reapproved: through December 14, 2026

Degrees: MSN, PMC, DNP

Programs: **FNP** (MSN, PMC, DNP)

NNP (MSN, PMC)

PNP (Acute & Primary) (MSN, PMC)

AGACNP (MSN, PMC, DNP)

AGPCNP (MSN, PMC, DNP)

NM (MSN, PMC, DNP)

NM/FNP (MSN, PMC, DNP)

PMHNP (MSN, PMC, DNP)

WHNP (MSN, PMC, DNP)

AGPCNP/WHNP (MSN, PMC, DNP)

FNP/ENP (MSN, PMC, DNP) NON-LICENSURE

NI (MSN, PMC, DNP) NON-LICENSURE

Rev. 11/1/2012, 1/10/2013, 1/14/2013, 3/8/2013,
4/22/2013, 5/1/2013, 7/1/2013, 8/21/2013,
10/15/2013, 11/5/2013, 12/18/2013, 2/25/2014,
5/13/2014, 6/18/2014, 8/7/2014, 9/11/2014,
10/23/2014, 12/15/2014, 2/19/2015, 4/15/2015,
5/28/2015, 6/25/2015, 8/26/2015, 11/3/2015,
12/23/2015, 2/16/2016, 3/2/2016, 4/21/2016,
6/29/2016, 9/6/2016, 10/17/2016, 2/23/2017,
4/24/2017, 5/8/2017, 6/12/2017, 7/24/2017,
8/22/2017, 9/19/2017, 12/1/2017, 12/22/2017,
2/28/2018, 5/23/2018, 6/14/2018, 8/16/2018,
10/25/2018, 1/10/2019, 2/22/2019, 6/18/2019,
8/29/2019, 10/15/2019, 12/31/2019, 2/21/2020,
6/30/2020, 9/1/2020, 10/21/2020, 12/11/2020,
2/19/2021, 4/23/2021, 6/22/2021, 7/9/2021,
8/18/2021, 10/20/2021, 12/10/2021, 2/16/2022,
4/25/2022, 6/22/2022, 8/18/2022, 10/24/2022,
12/22/2022, 2/27/2023, 4/20/2023, 5/8/2023,
6/26/2023, 8/21/2023, 9/13/2023, 10/26/2023,
11/2/2023, 12/27/2023, 3/7/2024, 3/8/2024,
3/19/2024, 4/23/2024, 5/6/2024, 8/20/2024,
10/11/2024, 10/22/2024, 12/12/2024, 2/24/2025,
4/28/2025, 6/30/2025, 7/28/2025, 9/2/2025, 10/23/2025
2/26/2026

APPENDIX B

NCLEX-RN Passage Rates Admissions, Enrollment, Graduates

Appendix B1

Performance of First Time Candidates of Nursing Education Programs in Louisiana on NCLEX-RN, regardless of where taking examination, January 1 - December 31, 2025.

Nursing Programs	Number of Candidates	Number Passing	Percent Passing
Associate Degree			
Baton Rouge CC	131	103	78.63
Bossier Parish CC	80	79	98.75
Delgado CC	201	180	89.55
Fletcher Technical CC	48	45	93.75
Louisiana Delta CC	74	57	77.03
LSU Alexandria	83	67	80.72
LSU Eunice	87	77	88.51
Louisiana Tech University	76	69	90.79
Northshore Technical CC	18	17	94.44
Northwestern State University	176	168	95.45
South Louisiana CC	76	68	89.47
Southern University Shreveport	29	26	89.66
SOWELA Technical CC	48	45	93.75
Total	1,127	1,001	88.82
Diploma			
Baton Rouge General	79	66	83.54
Total	79	66	83.54
Baccalaureate			
Chamberlain University	131	107	81.68
Dillard University	26	20	76.92
Franciscan Missionaries of Our Lady University	88	88	100.00
Grambling State University	10	10	100.00
Herzing University	32	27	84.38
LSU Health Sciences Center	227	206	90.75
Loyola	35	26	74.29
McNeese State University	72	72	100.00
Nicholls State University	114	112	98.25
Northwestern State University	123	112	91.06
Southeastern LA University	144	140	97.22
Southern University BR	114	79	69.30
Southern University New Orleans	9	6	66.67
University of Holy Cross	36	31	86.11
University of LA Lafayette	139	135	97.12
University of LA Monroe	70	67	95.71
William Carey University	17	16	94.12
Total	1,387	1,254	90.41
GRAND TOTAL	2,593	2,321	89.51

Appendix B2
Applicants, Admissions, Enrollment, and Graduates of Nursing Education Programs in Louisiana (2008-2025)

YEAR	APPLICANTS	ADMISSIONS	ENROLLMENT Clinical Nursing Courses	ENROLLMENT All Nursing Majors	QUALIFIED APPLICANTS NOT ADMITTED	GRADUATES
2025	5,645	4,326	7,796	15,288	1,319	2,672
2024	4,879	3,955	6,990	15,099	924	2,489
2023	4,224	3,626	6,617	11,963	598	2,608
2022	4,363	3,545	6,672	13,284	818	2,390
2021	5,004	3,717	7,063	14,097	1,287	2,438
2020	4,992	3,611	6,973	14,725	1,381	2,148
2019	4,889	3,390	6,476	14,170	1,499	2,009
2018	4,591	3,198	5,884	14,906	1,393	1,885
2017	4,401	2,995	5,470	14,166	1,406	1,877
2016	3,860	2,541	5,466	16,813	1,319	2,064
2015	4,088	2,712	5,599	12,420	1,376	2,074
2014	4,351	2,956	5,836	12,575	1,395	2,081
2013	4,661	2,904	5,780	14,050	1,757	2,274
2012	4,544	2,979	6,214	13,245	1,566	2,281
2011	4,705	3,252	6,114	15,988	1,453	2,281
2010	4,737	3,384	6,175	14,779	1,353	2,239
2009	4,898	3,306	6,077	15,232	1,592	2,230
2008	5,110	3,420	6,311	13,797	1,690	2,113

Appendix B3
Qualified Applicants and Admissions: Diploma, Associate, and Baccalaureate Degree
Programs in Nursing (2021-2025)

Program	Qualified Applicants					Admissions				
	2021	2022	2023	2024	2025	2021	2022	2023	2024	2025
<u>Associate Degree</u>										
Baton Rouge CC	313	188	188	449	699	148	135	152	203	184
Bossier Parish CC	157	121	110	116	130	140	118	110	116	127
Delgado	630	545	412	364	415	399	334	324	364	414
Fletcher Tech CC	40	47	69	102	188	36	42	61	68	96
LSU Alexandria	116	110	165	171	179	116	110	118	171	179
LSU Eunice	174	121	110	160	132	100	94	108	95	107
Louisiana Delta	120	73	94	133	108	67	60	86	67	40
Louisiana Tech	171	190	165	182	184	104	105	100	112	101
Northshore Technical CC	N/A	N/A	118	65	74	N/A	N/A	30	56	72
Northwestern	179	180	177	184	182	179	180	177	184	182
South Louisiana CC	183	195	149	207	326	65	59	82	111	141
Southern Univ. at Shreveport	100	67	40	53	48	96	67	40	46	37
SOWELA Technical CC	60	79	69	101	106	59	56	63	89	105
TOTAL	2,243	1,916	1,866	2,287	2,771	1,509	1,360	1,451	1,682	1,785
<u>Baccalaureate</u>										
Chamberlain	150	207	287	309	321	150	207	287	309	321
Dillard	26	39	36	29	24	26	36	36	29	24
Grambling	39	25	20	39	44	39	25	20	39	44
Herzing	42	44	31	25	30	42	44	31	25	30
Louisiana Christian Univ	35	24	0	11	9	35	14	0	11	9
LSU Health New Orleans	268	262	278	243	401	268	254	278	243	401
Loyola	12	21	45	39	52	12	21	45	39	52
McNeese	150	109	106	122	112	120	109	106	122	112
Nicholls	264	162	162	165	161	162	162	141	145	151
Northwestern	312	241	190	204	168	288	241	190	204	168
Franciscan Missionaries of Our Lady University	164	138	156	124	108	164	138	156	124	108
Southeastern	356	275	198	251	241	197	186	171	182	201
Southern BR	347	352	355	398	307	231	278	229	280	259
Southern New Orleans	N/A	10	27	29	56	N/A	10	27	29	40
Tulane University	N/A	N/A	0	7	45	N/A	N/A	0	7	45
University of Holy Cross	56	59	40	41	39	49	59	40	41	39
UL Lafayette	297	216	206	291	293	218	207	206	240	231
UL Monroe	82	84	100	83	123	82	84	100	83	123
William Carey	54	66	34	32	146	38	35	34	32	75
TOTAL	2,654	2,334	2,271	2,442	2,680	2,121	2,110	2,097	2,184	2,433
<u>Diploma</u>										
Baton Rouge Gen. Med. Ctr.	107	113	87	150	194	87	75	78	89	108
TOTAL	107	113	87	150	194	87	75	78	89	108
GRAND TOTAL	5,004	4,363	4,224	4,879	5,645	3,717	3,545	3,626	3,955	4,326

Appendix B4
Reported Reasons Why Qualified Applicants Were Not Admitted to Louisiana's Pre-RN Licensure Programs in 2025

Nursing Programs	Number of Qualified Applicants Not Admitted	Ranking of Reasons for Non-Admission of Qualified Applicants (1 = Most Important to 7 = Least Important; 0 = Not Applicable)							
		Budgeted Faculty Position Not Available	Qualified Faculty Not Available	Faculty Salary Not Competitive	Classroom Space Not Available	Skills Lab Space Not Available	Clinical Placement Sites Not Available	Lack of Clinical Specialty Sites	Other
Associate Degree									
Baton Rouge Comm. College	515	3	2	1	6	7	5	4	0
Bossier Parish Comm. College	3	5	1	6	4	7	2	3	0
Delgado	1	3	1	2	6	7	5	4	0
Fletcher Tech Comm. College	92	1	5	4	3	7	6	2	0
LSU Alexandria	0	0	0	0	0	0	0	0	0
LSU Eunice	25	0	1	2	0	0	0	0	0
Louisiana Delta College	68	2	1	3	7	6	5	4	0
Louisiana Tech	83	1	6	2	5	4	3	7	0
Northshore Technical CC	2	2	3	1	6	5	7	4	0
Northwestern State	0	0	0	0	0	0	0	0	0
South Louisiana Comm. Coll.	185	3	1	2	7	6	4	5	0
Southern Univ. Shreveport	11	0	1	2	0	0	0	0	0
SOWELA Technical CC	1	3	1	2	4	5	6	7	0
Total	986	23	23	27	48	54	43	40	0
Baccalaureate Degree									
Chamberlain	0	0	0	0	0	0	0	0	0
Dillard	0	0	0	0	0	0	0	0	0
Grambling	0	0	0	0	0	0	0	0	0
Herzing	0	0	0	0	0	0	0	0	0
Louisiana Christian University	0	0	0	0	0	0	0	0	0
LSU Health New Orleans	0	0	0	0	0	0	0	0	0
Loyola	0	0	0	0	0	0	0	0	0
McNeese State	0	0	0	0	0	0	0	0	0
Nicholls State	10	1	3	2	6	7	4	5	0
Northwestern State	0	0	0	0	0	0	0	0	0
Franciscan Missionaries of Our Lady University	0	0	0	0	0	0	0	0	0
Southeastern	40	1	3	2	7	6	5	4	0
Southern BR	48	2	3	1	6	7	4	5	0
Southern New Orleans	16	1	3	2	6	7	4	5	0
Tulane University	0	0	0	0	0	0	0	0	0
University of Holy Cross	0	0	0	0	0	0	0	0	0
UL Lafayette	62	1	3	2	4	5	6	7	0
UL Monroe	0	0	0	0	0	0	0	0	0
William Carey	71	0	0	0	0	0	0	0	1
Total	247	6	15	9	29	32	23	26	1
Diploma									
Baton Rouge General	86	6	2	3	1	4	7	5	0
Total	86	6	2	3	1	4	7	5	0
Grand Total	1,319	35	40	39	78	90	73	71	1

Appendix B5
Gender of Students Enrolled in Clinical Nursing Programs in Pre-RN Licensure Programs in Louisiana
during the 2025 Report Year

PROGRAM	Male		Female		Total No.
	No.	%	No.	%	
<u>Associate Degree</u>					
Baton Rouge CC	41	11	319	89	360
Bossier	24	14	144	86	168
Delgado	86	11	697	89	783
Fletcher Technical CC	11	15	64	85	75
LSU Alexandria	32	13	223	87	255
LSU Eunice	18	12	136	88	154
Louisiana Delta	14	14	86	86	100
Louisiana Tech	40	21	152	79	192
Northshore Technical CC	10	9	100	91	110
Northwestern	40	14	245	86	285
South Louisiana CC	12	7	158	93	170
Southern Univ. at Shreveport	2	4	44	96	46
SOWELA Technical CC	11	9	108	91	119
Total	341	12	2,476	88	2,817
<u>Baccalaureate</u>					
Chamberlain	38	6	568	94	606
Dillard	4	5	76	95	80
Grambling	6	10	55	90	61
Herzing	5	9	48	91	53
LA Christian University	2	12	15	88	17
LSU Health New Orleans	108	15	635	85	743
Loyola	15	14	92	86	107
McNeese State	38	14	229	86	267
Nicholls State	51	12	358	88	409
Northwestern	47	14	279	86	326
FMOLU	31	13	201	87	232
Southeastern	43	11	359	89	402
Southern BR	31	7	384	93	415
Southern New Orleans	7	8	77	92	84
Tulane University	7	21	26	79	33
University of Holy Cross	7	7	91	93	98
UL Lafayette	80	17	399	83	479
UL Monroe	32	13	216	87	248
William Carey	5	4	119	96	124
Total	557	12	4,227	88	4,784
<u>Diploma</u>					
Baton Rouge General	17	9	178	91	195
Total	17	9	178	91	195
Grand Total	915	12	6,881	88	7,796

Appendix B6

Ethnic Backgrounds of Students Enrolled in Pre-RN Licensure Programs in Louisiana during the 2025 Report Year

Nursing Education Programs	Hispanic		Asian		Black		White		Other		Total
	No.	%	No.	%	No.	%	No.	%	No.	%	No.
<u>Associate Degree</u>											
Baton Rouge CC	24	7	10	3	166	46	160	44	0	0	360
Bossier	2	1	1	1	38	23	121	72	6	4	168
Delgado	4	1	24	3	415	53	286	37	54	7	783
Delta CC	2	2	1	1	34	34	63	63	0	0	100
Fletcher Tech CC	3	4	3	4	20	27	47	63	2	3	75
LSU Alexandria	2	1	10	4	87	34	131	51	25	10	255
LSU Eunice	2	1	0	0	22	14	125	81	5	3	154
Louisiana Tech	4	2	5	3	9	5	164	85	10	5	192
Northshore Technical CC	0	0	1	1	37	34	72	65	0	0	110
Northwestern State	20	7	0	0	93	33	152	53	20	7	285
South LA CC	3	2	2	1	91	54	74	44	0	0	170
Southern Univ. Shreveport	1	2	0	0	38	83	6	13	1	2	46
SOWELA Technical CC	6	5	2	2	33	28	76	64	2	2	119
Total	73	3	59	2	1,083	38	1,477	52	125	4	2,817
<u>Baccalaureate</u>											
Chamberlain	52	9	6	1	402	66	108	18	38	6	606
Dillard	3	4	1	1	70	88	0	0	6	7	80
Grambling	0	0	0	0	57	93	0	0	4	7	61
Herzing	2	4	1	2	36	68	12	23	2	4	53
LA Christian University	0	0	0	0	3	18	14	82	0	0	17
LSU Health New Orleans	91	12	62	8	183	25	364	49	43	6	743
Loyola	25	23	7	6	35	33	30	28	10	9	107
McNeese State	10	4	7	3	39	15	161	60	50	19	267
Nicholls State	27	7	9	2	52	13	292	71	29	7	409
Northwestern State	20	6	2	1	91	28	187	57	26	8	326
FMOLU	13	6	8	3	40	17	159	69	12	5	232
Southeastern	25	6	13	3	58	14	291	72	15	4	402
Southern BR	1	0.5	1	0.5	402	97	4	1	7	2	415
Southern New Orleans	3	4	0	0	79	94	0	0	2	2	84
Tulane University	2	6	2	6	9	27	20	61	0	0	33
University of Holy Cross	20	20	4	4	25	25	41	42	8	8	98
UL Lafayette	23	5	10	2	101	21	320	67	25	5	479
UL Monroe	2	1	38	15	57	23	143	58	8	3	248
William Carey	3	2	3	2	72	58	43	35	3	2	124
Total	322	7	174	4	1,811	38	2,189	46	288	6	4,784
<u>Diploma</u>											

Nursing Education Programs	Hispanic		Asian		Black		White		Other		Total
Baton Rouge General	2	1	4	2	113	58	74	38	2	1	195
Total	2	1	4	2	113	58	74	38	2	1	195
Grand Total	397	5	237	3	3,007	39	3,740	48	415	5	7,796

Appendix B7

Data on pre-RN Licensure Students Enrolled in Clinical Nursing Courses with Prior Education as of December 31, 2025

Nursing Education Programs	LPN		Other Health Field		Other Degree		Total of Pre-RN Students with Prior Education		Total Enrollment in Clinical
	No.	%	No.	%	No.	%	No.	%	No.
<u>Associate Degree</u>									
BRCC	41	11.4	72	20.0	103	28.6	216	60.0	360
Bossier Parish CC	33	19.6	9	5.4	37	22.0	79	47.0	168
Delgado	103	13.2	0	0	82	10.5	185	23.6	783
Fletcher Tech. CC	33	44.0	0	0	10	13.3	43	57.3	75
Louisiana Delta CC	23	23.0	13	13.0	21	21.0	57	57.0	100
LSU Alexandria	55	21.6	2	0.8	0	0	57	22.4	255
LSU Eunice	12	7.8	4	2.6	5	3.2	21	13.6	154
Louisiana Tech	1	0.5	2	1.0	8	4.2	11	5.7	192
Northshore Tech CC	16	14.5	10	9.1	0	0	26	23.6	110
Northwestern	47	16.5	32	11.2	0	0	79	27.7	285
Southern Shreveport	18	39.1	0	0	3	6.5	21	45.7	46
South Louisiana CC	91	53.5	4	2.4	41	24.1	136	80.0	170
SOWELA Tech CC	17	14.3	7	5.9	22	18.5	46	38.7	119
Total	490	17.4	155	5.5	332	11.8	977	34.7	2,817
<u>Baccalaureate</u>									
Chamberlain	0	0	0	0	0	0	0	0	606
Dillard	1	1.3	0	0	0	0	1	1.3	80
Grambling	1	1.6	0	0	0	0	1	1.6	61
Herzing	0	0	0	0	0	0	0	0	53
LA Christian Univ.	0	0	0	0	6	35.3	6	35.3	17
LSU Health NO	0	0	0	0	141	19.0	141	19.0	743
Loyola	0	0	0	0	12	11.2	12	11.2	107
McNeese State	0	0	0	0	70	26.2	70	26.2	267
Nicholls State	12	2.9	11	2.7	23	5.6	46	11.2	409
Northwestern	9	2.8	0	0	30	9.2	39	12.0	326
FMOLU	0	0	0	0	58	25.0	58	25.0	232
Southeastern	7	1.7	0	0	0	0	7	1.7	402
Southern BR	2	0.5	0	0	23	5.5	25	6.0	415
Southern NOLA	0	0	0	0	0	0	0	0	84
Tulane University	0	0	11	33.3	22	66.7	33	100	33
Univ. of Holy Cross	0	0	0	0	0	0	0	0	98
UL Lafayette	0	0	0	0	0	0	0	0	479
UL Monroe	2	0.8	0	0	6	2.4	8	3.2	248
William Carey	50	40.3	4	3.2	30	24.2	84	67.7	124
Total	84	1.8	26	0.5	421	8.8	531	11.1	4,784
<u>Diploma</u>									
Baton Rouge Gen.	25	12.8	23	11.8	51	26.2	99	50.8	195
Total	25	12.8	23	11.8	51	26.2	99	50.8	195
GRAND TOTAL	599	7.7	204	2.6	804	10.3	1,607	20.6	7,796

Appendix B8
Graduates of Associate, Baccalaureate, and Diploma Nursing Education Programs
(2019–2025)

Nursing Program	2019	2020	2021	2022	2023	2024	2025	Projected 2026
<u>Associate</u>								
Baton Rouge CC	46	46	49	79	74	102	171	176
Bossier Parish CC	44	43	59	83	67	90	82	103
Delgado	213	202	275	243	339	220	242	350
Fletcher Technical CC	14	15	25	21	34	44	48	76
LSU Alexandria	62	64	72	74	115	79	97	100
LSU Eunice	63	78	82	65	91	53	55	80
Louisiana Delta	27	39	37	47	14	76	56	18
Louisiana Tech	53	52	76	63	183	89	77	85
Northshore Technical CC	N/A	N/A	N/A	N/A	0	0	34	51
Northwestern	139	154	143	109	98	106	149	150
South Louisiana CC	34	48	60	54	43	65	76	76
Southern Univ. at Shreveport	70	42	50	33	34	32	21	15
SOWELA Technical CC	22	33	36	37	44	49	66	80
Total	787	816	964	908	1,136	1,005	1,174	1,360
<u>Baccalaureate</u>								
Chamberlain	0	4	66	84	79	123	111	190
Dillard	8	6	3	12	16	16	22	26
Grambling	0	0	7	16	11	13	10	12
Herzing	0	0	0	8	38	34	26	20
Louisiana Christian University	20	26	26	19	25	11	3	8
LSU Health New Orleans	222	251	234	230	201	225	231	252
Loyola	-	-	0	0	0	17	35	46
McNeese State	58	93	90	92	88	80	86	112
Nicholls State	117	128	145	136	132	118	110	113
Northwestern	167	158	206	164	201	169	140	130
FMOLU	87	80	94	109	96	103	99	101
Southeastern	152	147	148	155	141	156	128	130
Southern Baton Rouge	82	101	118	98	129	86	112	119
Southern New Orleans	N/A	N/A	N/A	0	0	0	0	18
Tulane University	N/A	N/A	N/A	N/A	0	0	6	27
University of Holy Cross	38	34	31	33	35	33	41	24
UL Lafayette	139	151	150	136	115	117	127	161
UL Monroe	98	89	114	93	80	93	90	66
William Carey	0	26	42	38	24	27	42	124
Total	1,188	1,294	1,474	1,423	1,411	1,421	1,419	1,679
<u>Diploma</u>								
Baton Rouge Gen. Med. Center	34	38	0	59	61	63	79	92
Total	34	38	0	59	61	63	79	92
Grand Total	2,009	2,148	2,438	2,390	2,608	2,489	2,672	3,131

APPENDIX C

Enrollment and Graduates from APRN Programs in Louisiana

Appendix C1

ENROLLMENT IN ADVANCED PRACTICE REGISTERED NURSE PROGRAMS IN LOUISIANA (2022-2025)

APRN PROGRAM	ENROLLMENT														
	Clinical Nurse Specialist				Nurse Practitioner				Nurse Anesthetist				Nurse Midwife		
	2022	2023	2024	2025	2022	2023	2024	2025	2022	2023	2024	2025	2023	2024	2025
Grambling University	N/A	N/A	N/A	N/A	25	25	21	22	N/A	N/A	N/A	N/A	N/A	N/A	N/A
Intercollegiate Consortium for a Master of Science in Nursing (ICMSN) McNeese State University Nicholls State University Southeastern Louisiana University University of Louisiana Lafayette	0	0	0	0	538	545	504	658	N/A	N/A	N/A	N/A	N/A	N/A	N/A
LSU Health New Orleans	1	0	0	3	46	41	51	64	161	173	175	174	2	4	5
Loyola University	N/A	N/A	N/A	N/A	87	101	81	130	N/A	16	38	56	10	20	13
McNeese State Univ.	N/A	N/A	N/A	N/A	14	15	13	10	N/A	N/A	N/A	N/A	N/A	N/A	N/A
Northwestern State University	0	N/A	N/A	N/A	284	272	269	116	37	53	54	64	N/A	N/A	N/A
Franciscan Missionaries of Our Lady University	N/A	N/A	N/A	N/A	30	36	37	41	96	99	113	111	N/A	N/A	N/A
Southern Univ. BR	0	0	0	0	40	34	29	23	N/A	N/A	N/A	N/A	N/A	N/A	N/A
University of Louisiana Lafayette	N/A	N/A	N/A	N/A	0	0	0	0	N/A	N/A	N/A	N/A	N/A	N/A	N/A
Southeastern Louisiana University	N/A	N/A	N/A	N/A	22	31	53	35	N/A	N/A	N/A	N/A	N/A	N/A	N/A
University of Louisiana Monroe	N/A	N/A	N/A	N/A	52	76	20	68	N/A	N/A	N/A	N/A	N/A	N/A	N/A
TOTALS	1	0	0	3	1,138	1,176	1,078	1,167	294	341	380	405	12	24	18

Appendix C2
GRADUATES FROM ADVANCED PRACTICE REGISTERED NURSE PROGRAMS IN LOUISIANA
(2012-2025)

APRN PROGRAM	GRADUATION													
	2012	2013	2014	2015	2016	2017	2018	2019	2020	2021	2022	2023	2024	2025
Grambling University	19	30	11	16	11	5	7	14	9	11	9	9	8	4
Intercollegiate Consortium for a Master of Science in Nursing (ICMSN) McNeese State University Nicholls State University Southeastern Louisiana University University of Louisiana at Lafayette	46	82	117	124	157	161	171	174	138	309	137	164	137	151
Loyola University	46	10	0	8	24	13	11	44	51	61	53	30	33	63
LSU Health New Orleans	84	73	76	76	84	61	58	65	56	66	65	60	66	69
Franciscan Missionaries of Our Lady University	26	56	27	27	28	22	22	37	41	34	38	39	49	45
McNeese State University	N/A	N/A	N/A	N/A	N/A	N/A	N/A	N/A	N/A	0	0	3	7	3
Northwestern State University	51	26	56	63	61	72	67	80	78	58	90	82	92	121
Southern University BR	35	46	55	32	33	35	30	30	21	33	14	13	8	9
University of Louisiana Lafayette	N/A	N/A	N/A	N/A	N/A	3	0	4	0	6	0	0	0	0
Southeastern Louisiana University	N/A	N/A	N/A	N/A	N/A	N/A	2	2	4	3	9	0	9	2
University of Louisiana Monroe	N/A	N/A	N/A	N/A	N/A	N/A	N/A	13	36	25	20	19	20	17
TOTALS	307	323	342	346	398	372	368	463	434	606	435	419	429	484